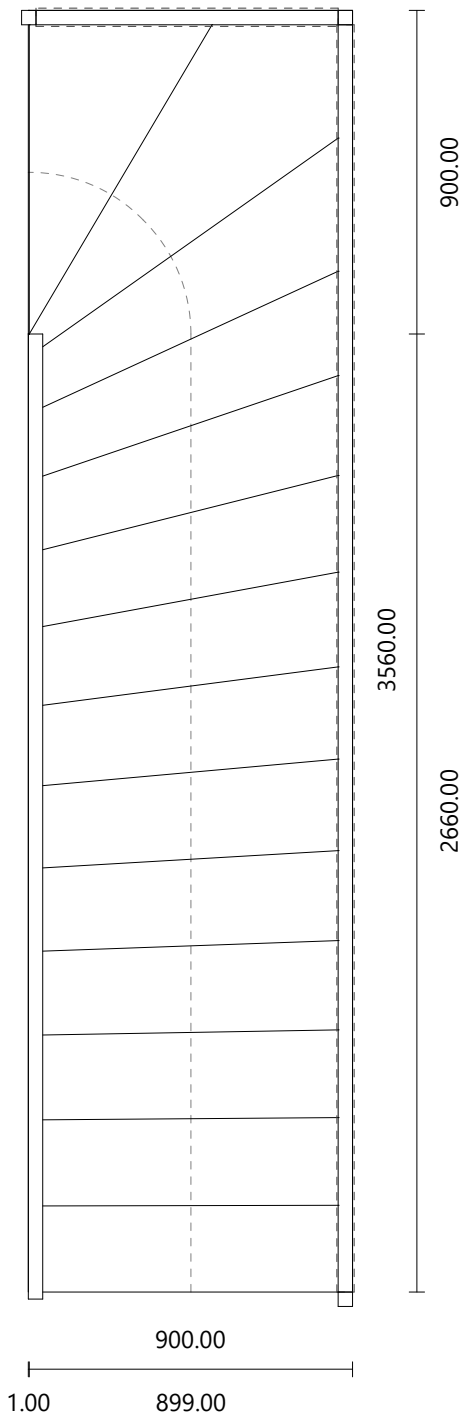
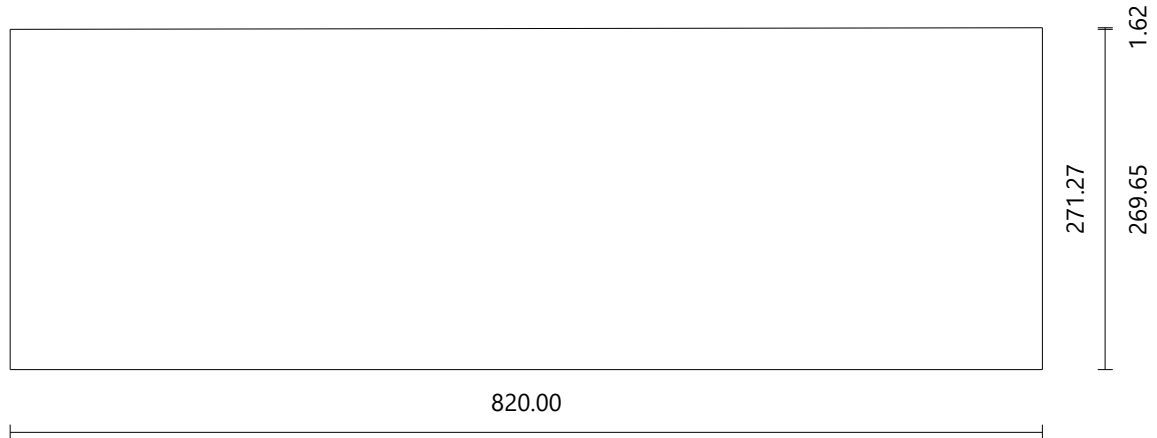


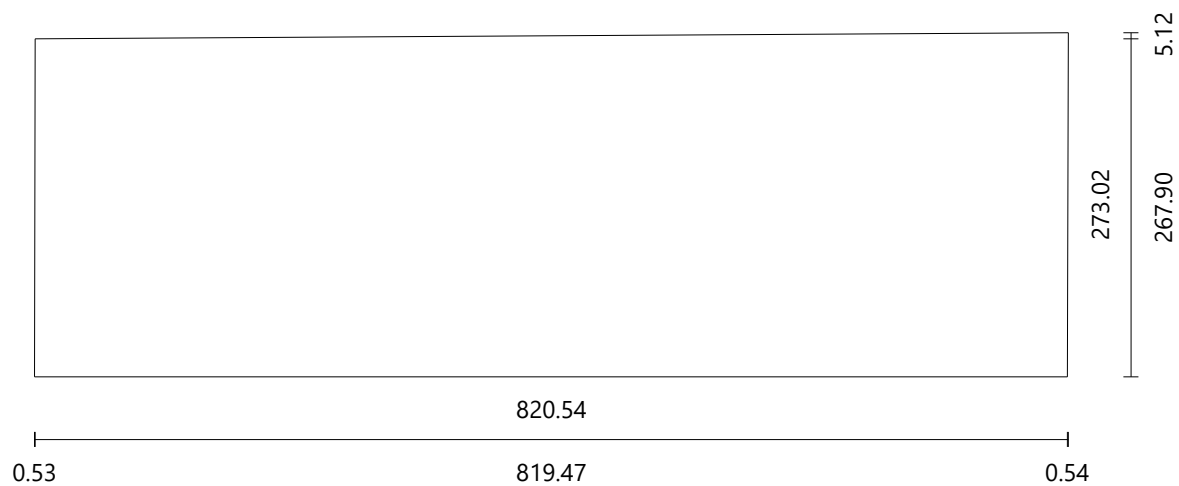
Multi-Flight Stair		Riser Height	186.67 mm
Risers	15	Tread Width	240.46 mm
Floor Height	2800.00 mm	Stair Rule	613.80 mm



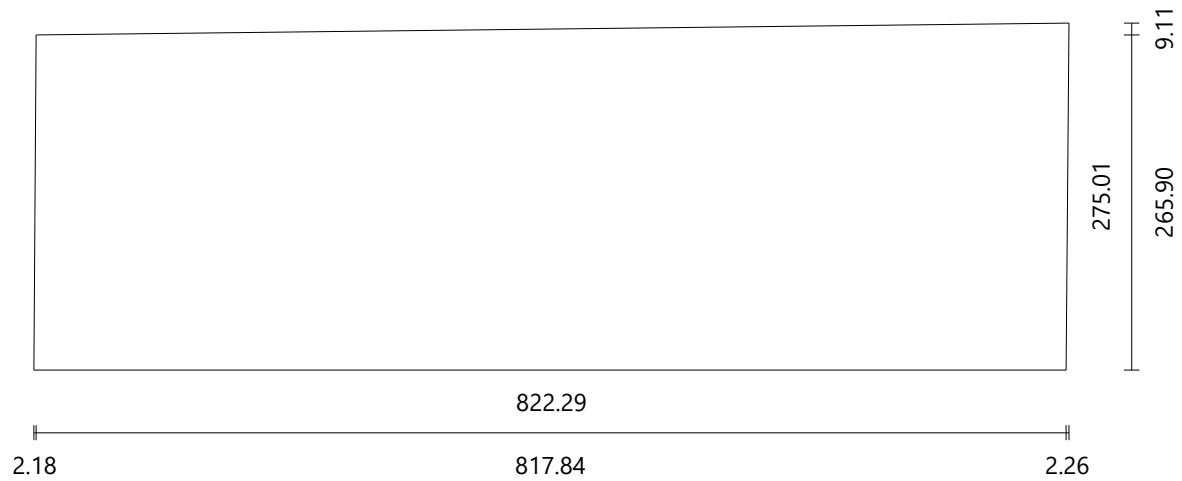
Material beech/hetre
Dimensions 820.00 × 271.27 mm
Thickness 40.00 mm



Material beech/hetre
Dimensions 820.54 × 273.02 mm
Thickness 40.00 mm



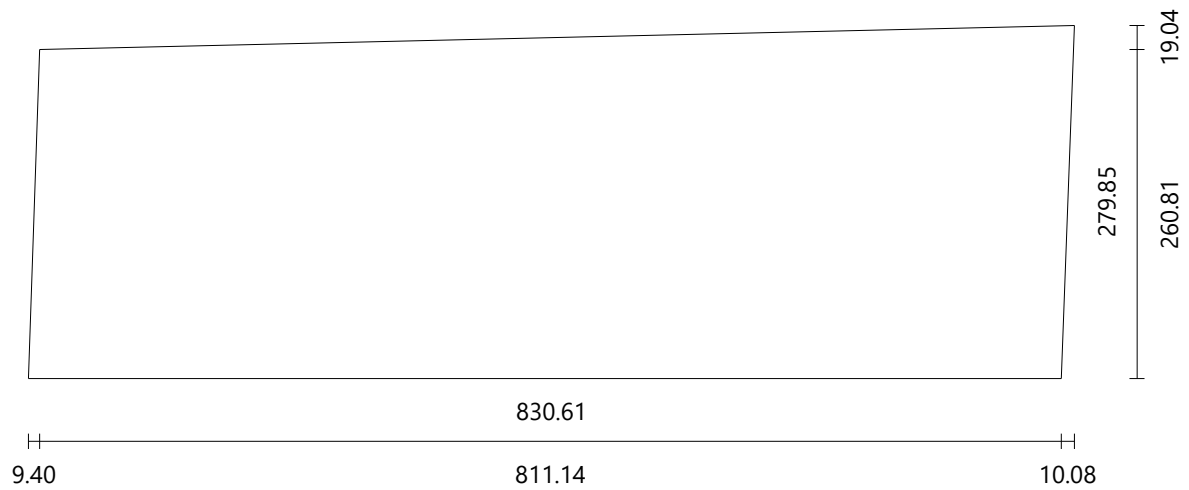
Material beech/hetre
Dimensions 822.29 × 275.01 mm
Thickness 40.00 mm



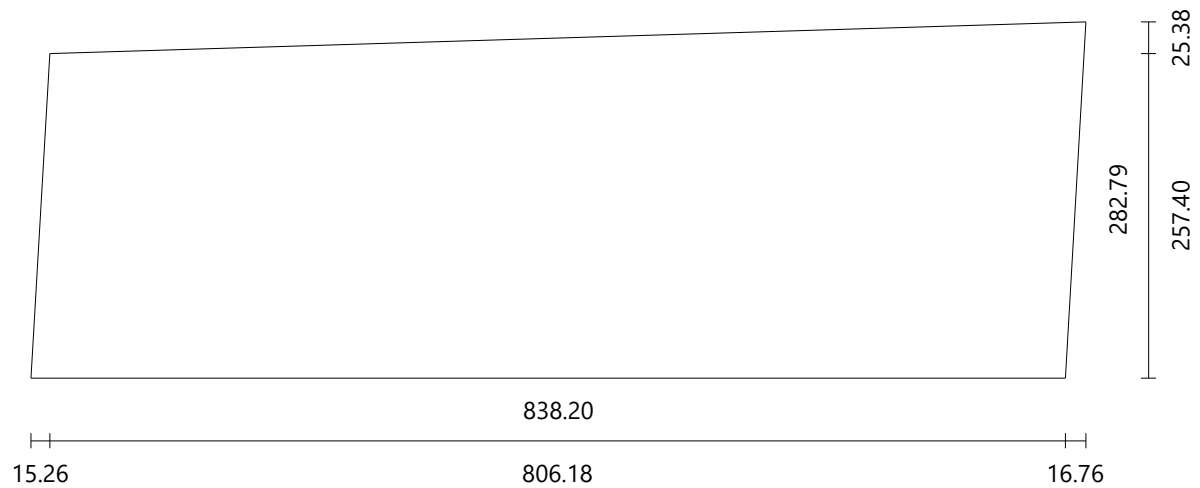
Material beech/hetre
Dimensions 825.51 × 277.27 mm
Thickness 40.00 mm



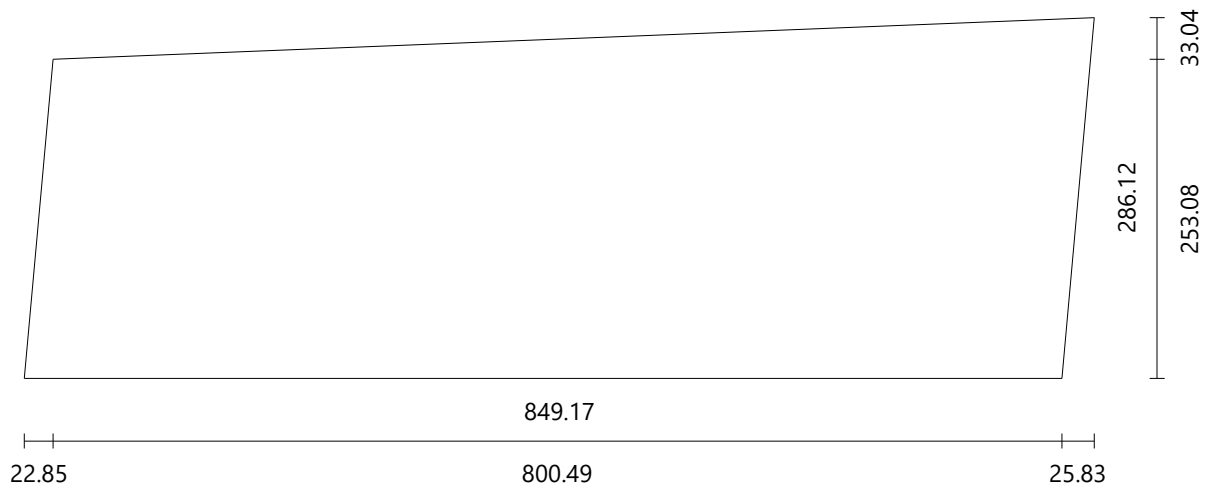
Material beech/hetre
Dimensions 830.61 × 279.85 mm
Thickness 40.00 mm



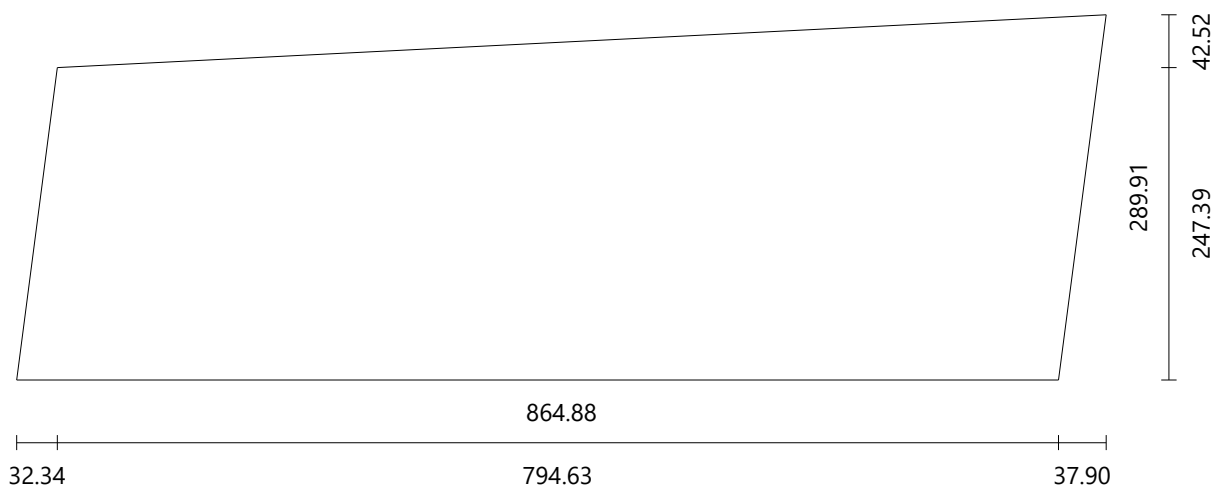
Material beech/hetre
Dimensions 838.20 × 282.79 mm
Thickness 40.00 mm



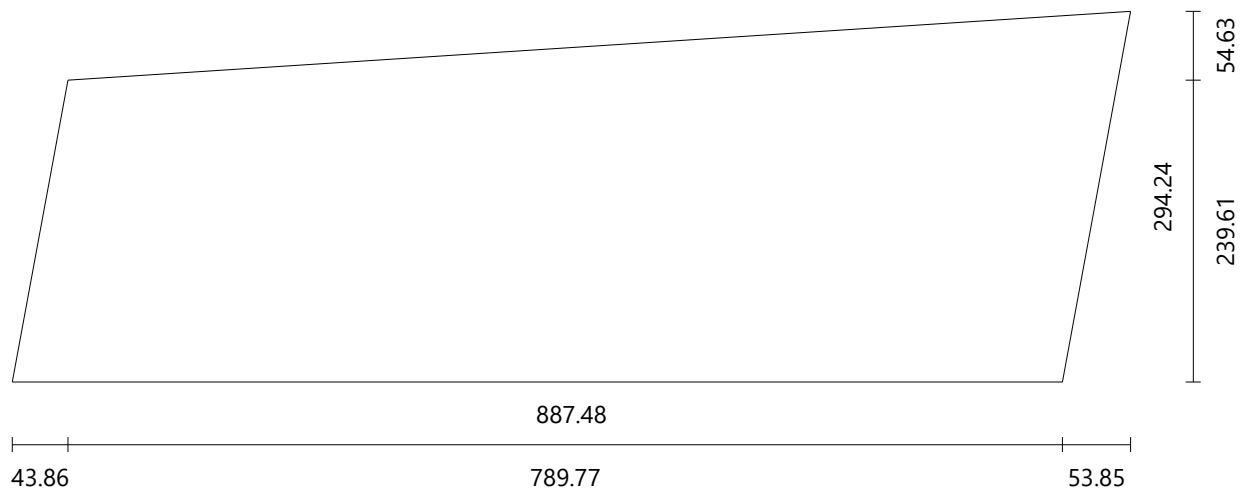
Material beech/hetre
Dimensions 849.17 × 286.12 mm
Thickness 40.00 mm



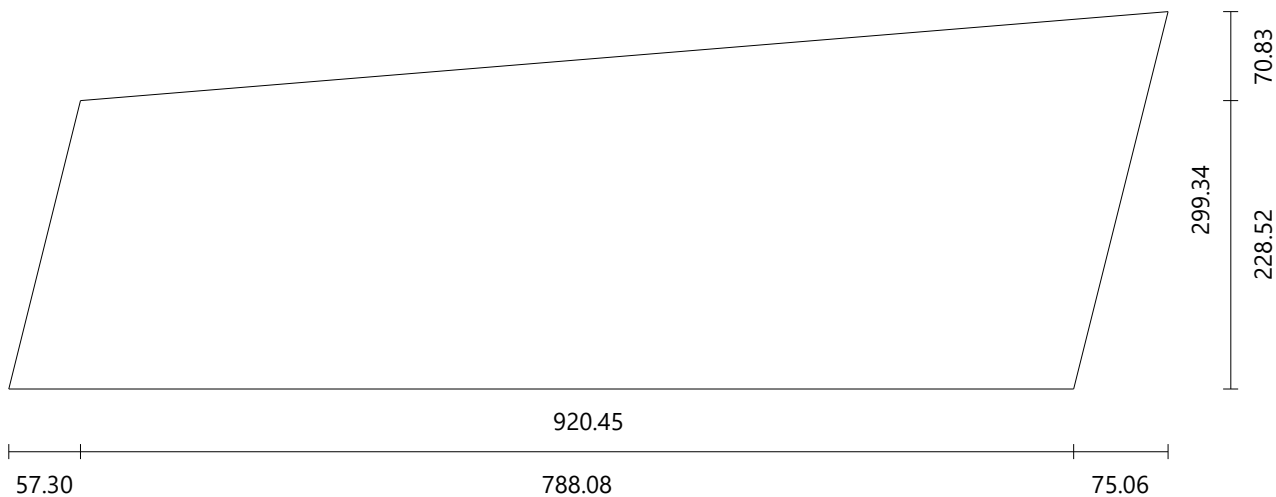
Material beech/hetre
Dimensions 864.88 × 289.91 mm
Thickness 40.00 mm



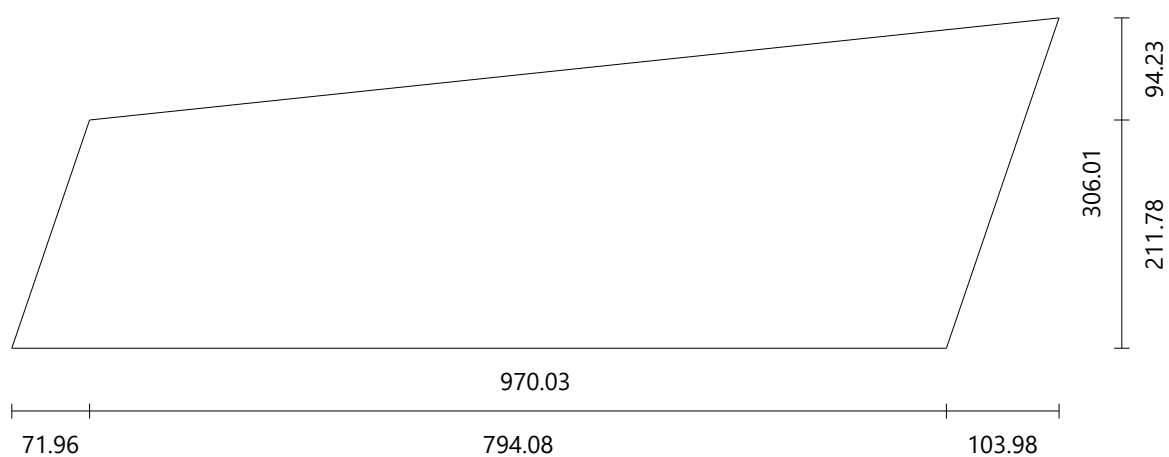
Material beech/hetre
Dimensions 887.48 × 294.24 mm
Thickness 40.00 mm



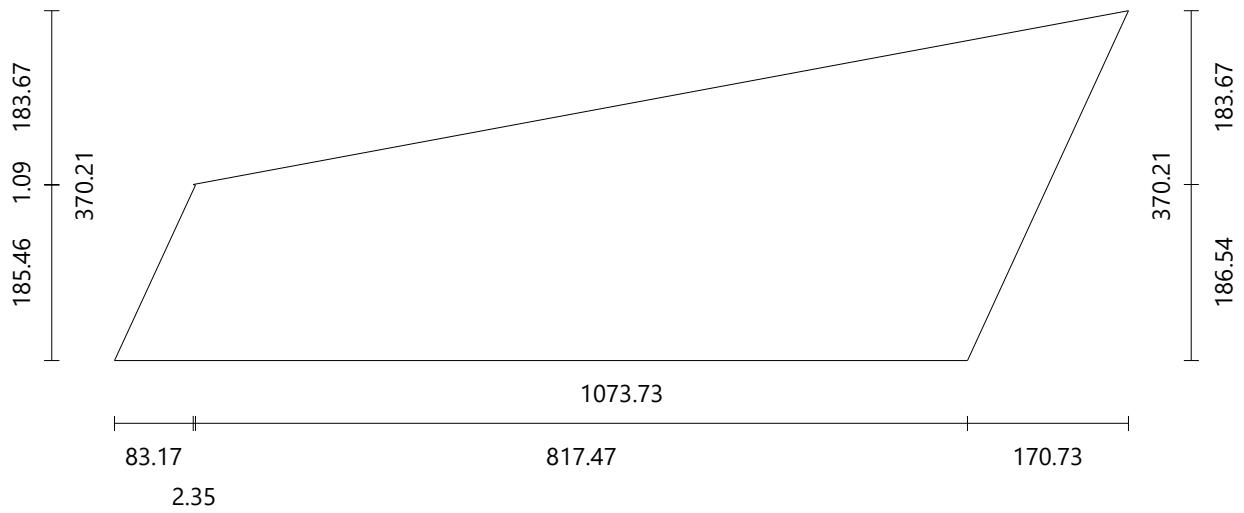
Material beech/hetre
Dimensions 920.45 × 299.34 mm
Thickness 40.00 mm



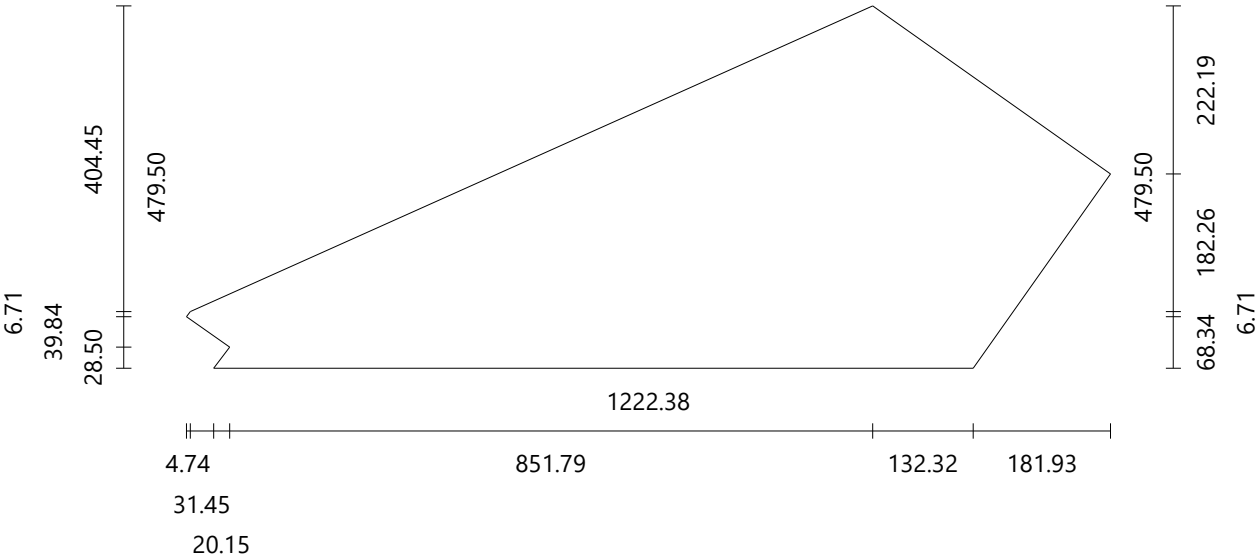
Material beech/hetre
Dimensions 970.03 × 306.01 mm
Thickness 40.00 mm



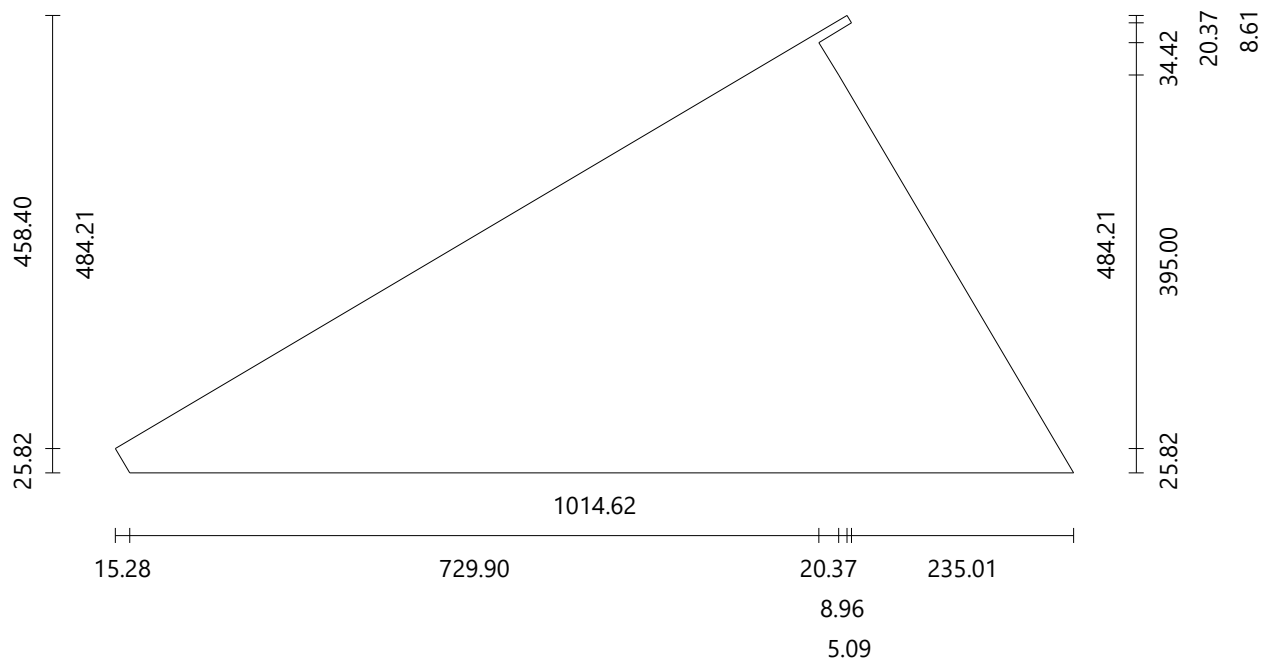
Material beech/hetre
Dimensions 1073.73 × 370.21 mm
Thickness 40.00 mm



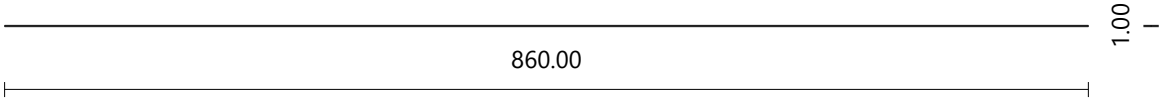
Material beech/hetre
 Dimensions 1222.38 × 479.50 mm
 Thickness 40.00 mm

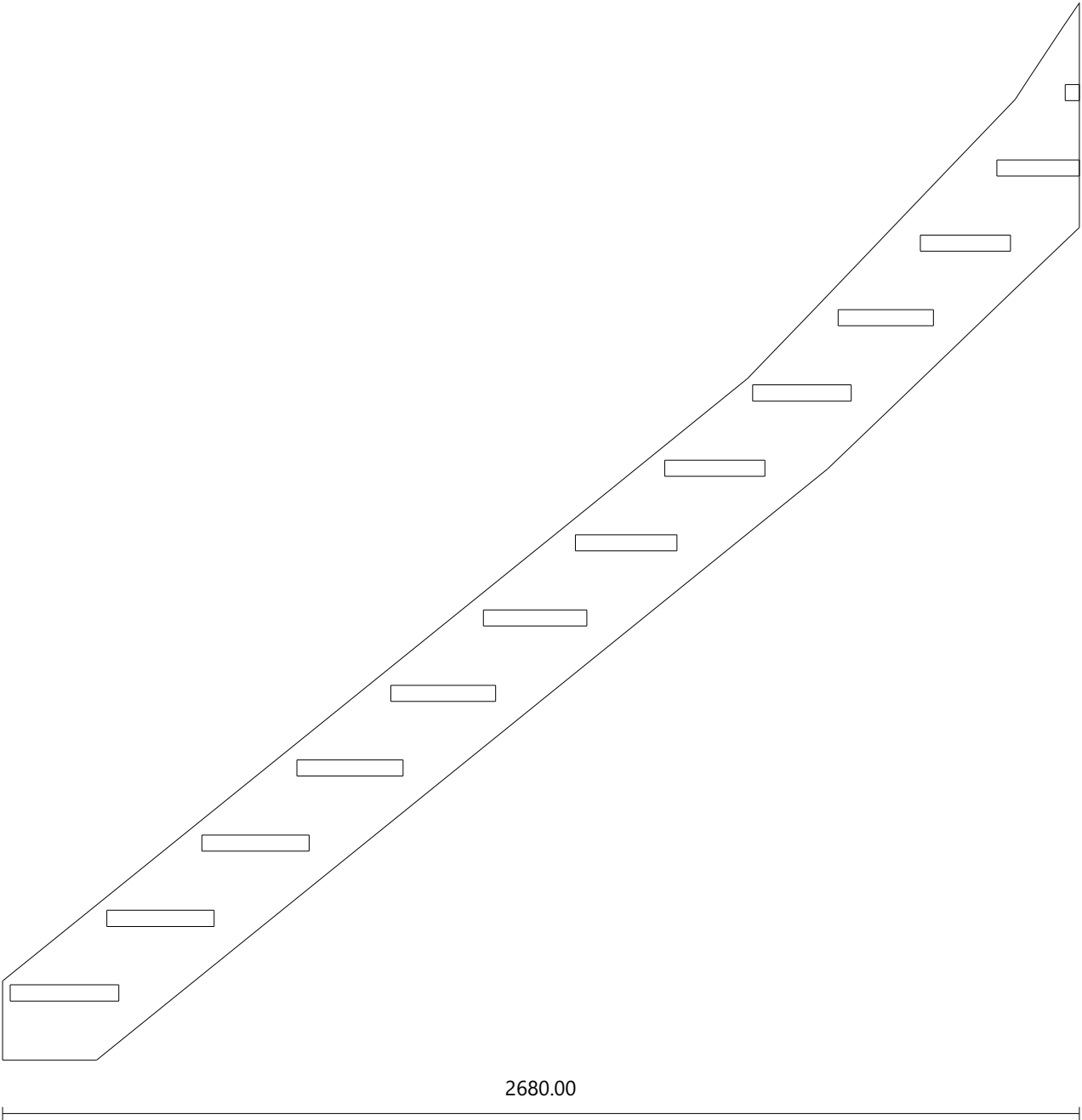


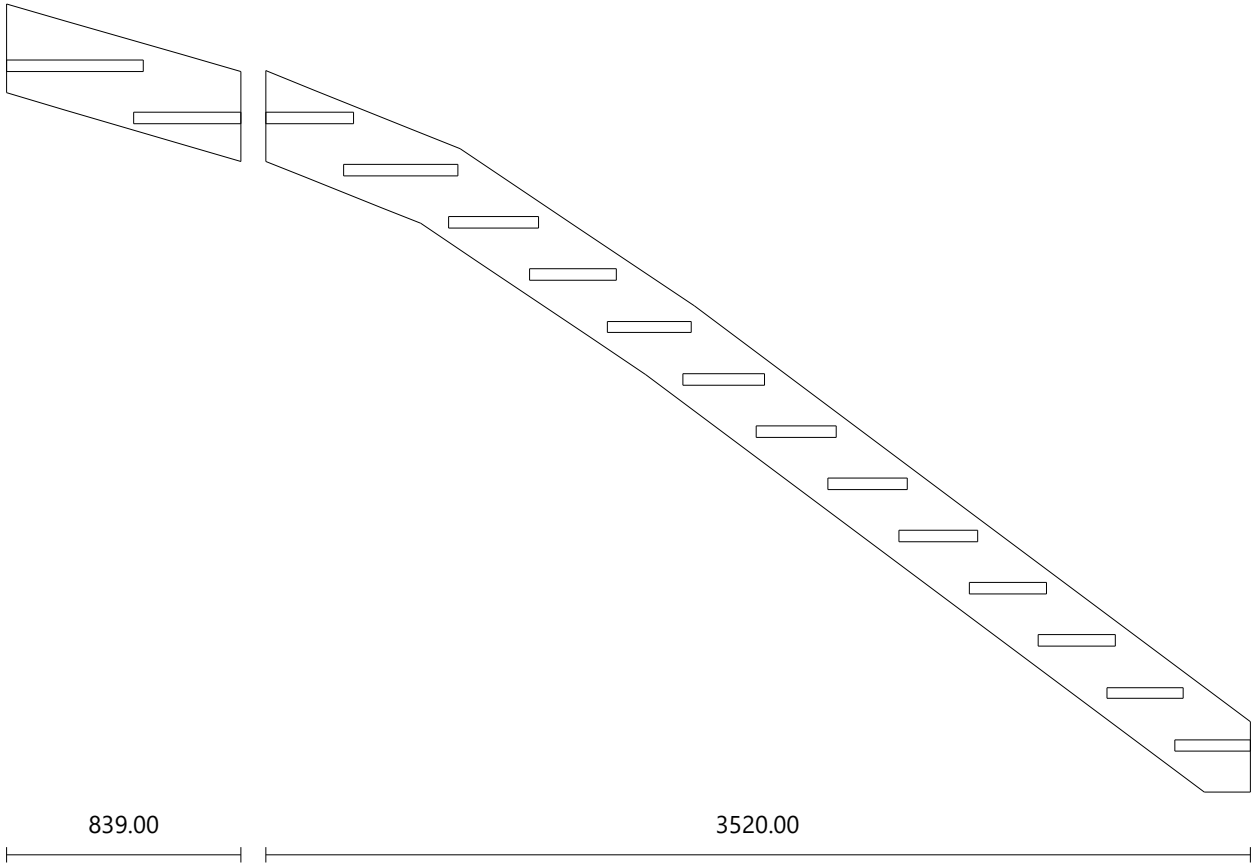
Material beech/hetre
Dimensions 1014.62 × 484.21 mm
Thickness 40.00 mm



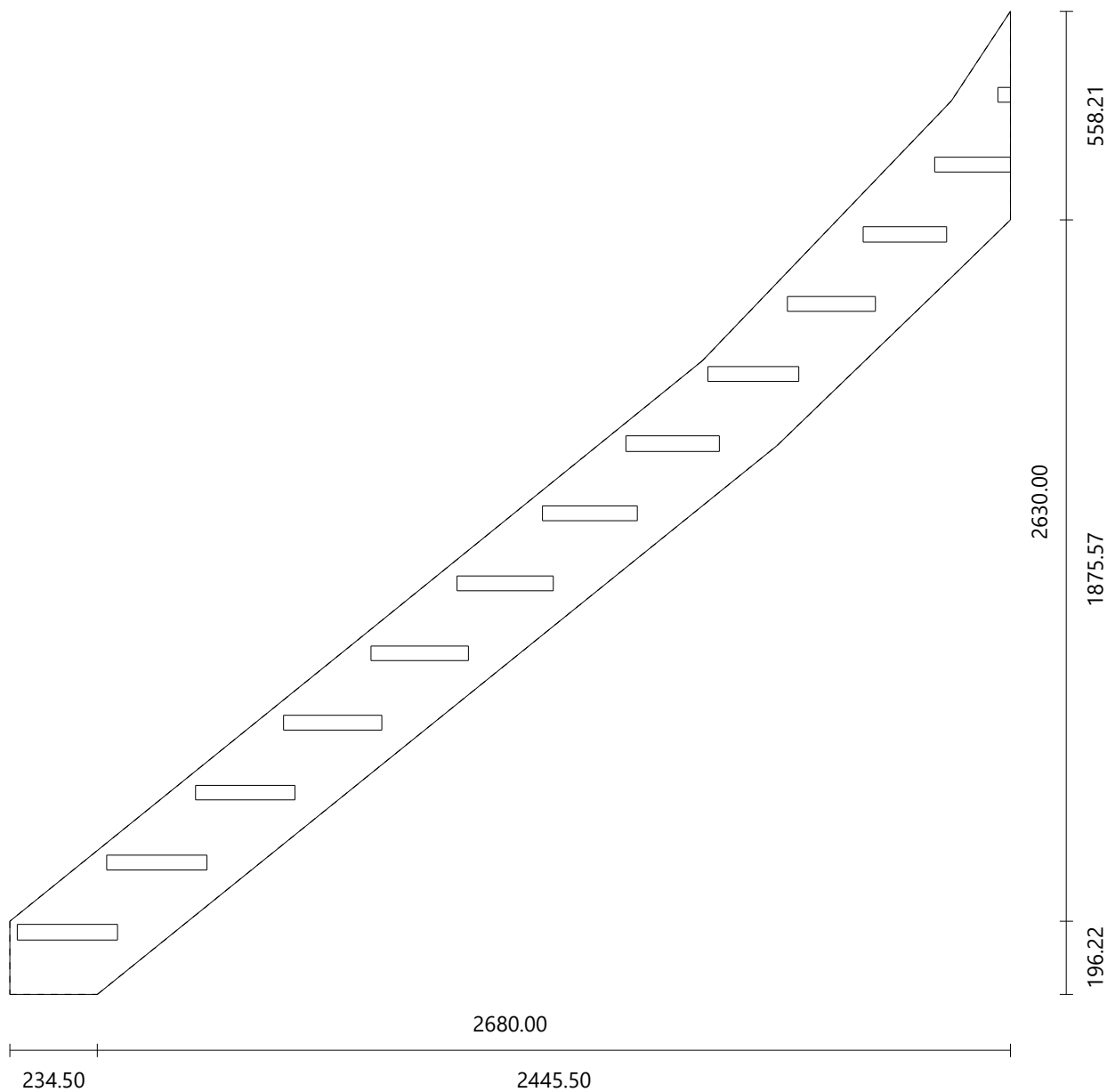
Material beech/hetre
Dimensions 860.00 × 1.00 mm
Thickness 40.00 mm



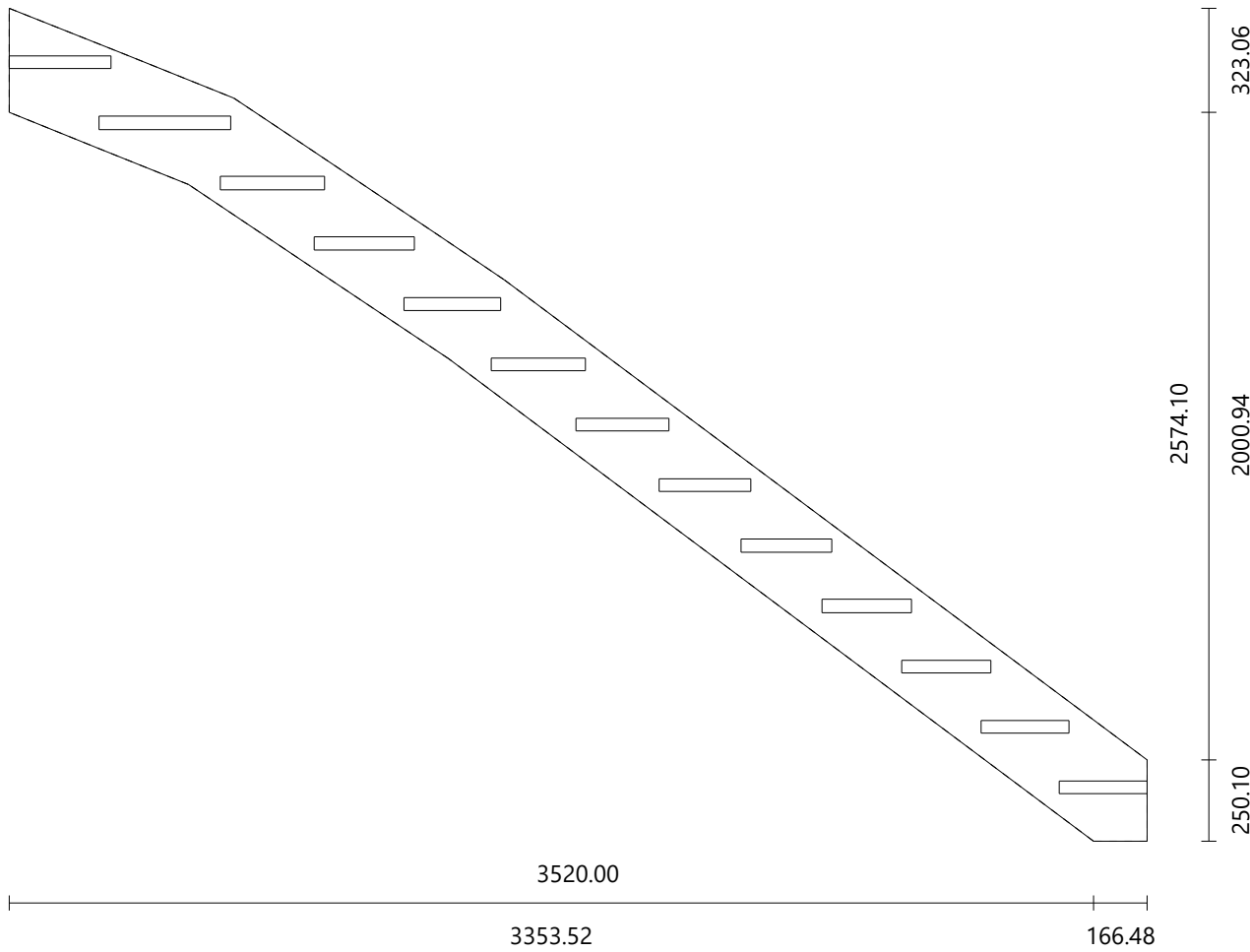




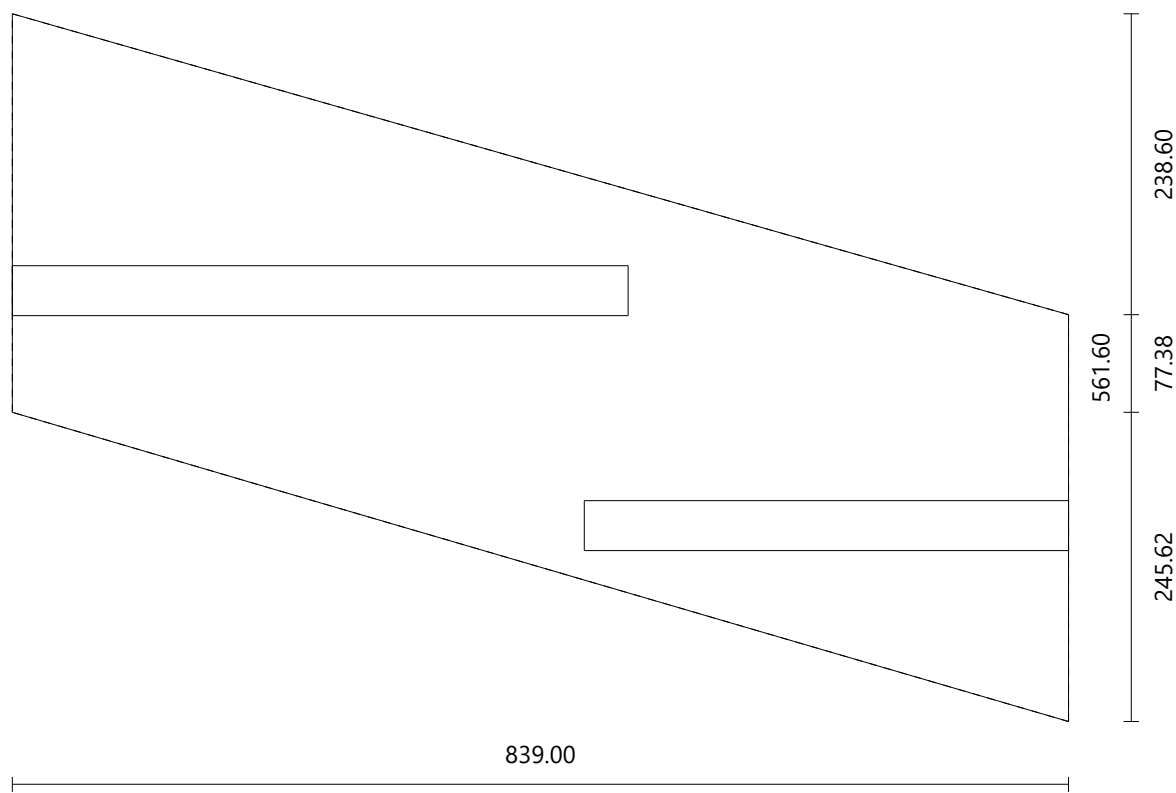
Material iron/fer
Dimensions 3752.09 × 437.99 mm
Thickness 40.00 mm

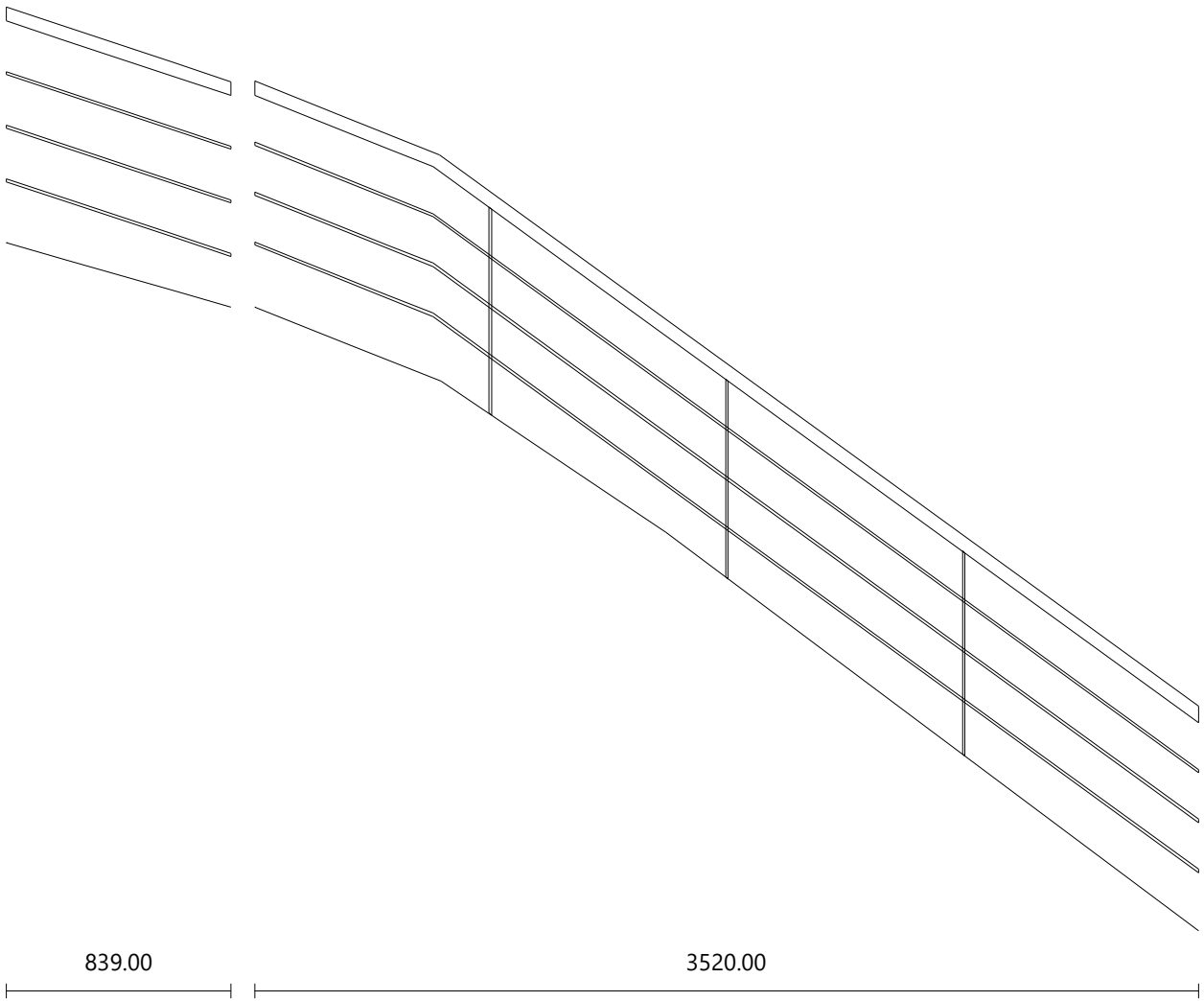


Material iron/fer
Dimensions 4357.25 × 425.71 mm
Thickness 40.00 mm

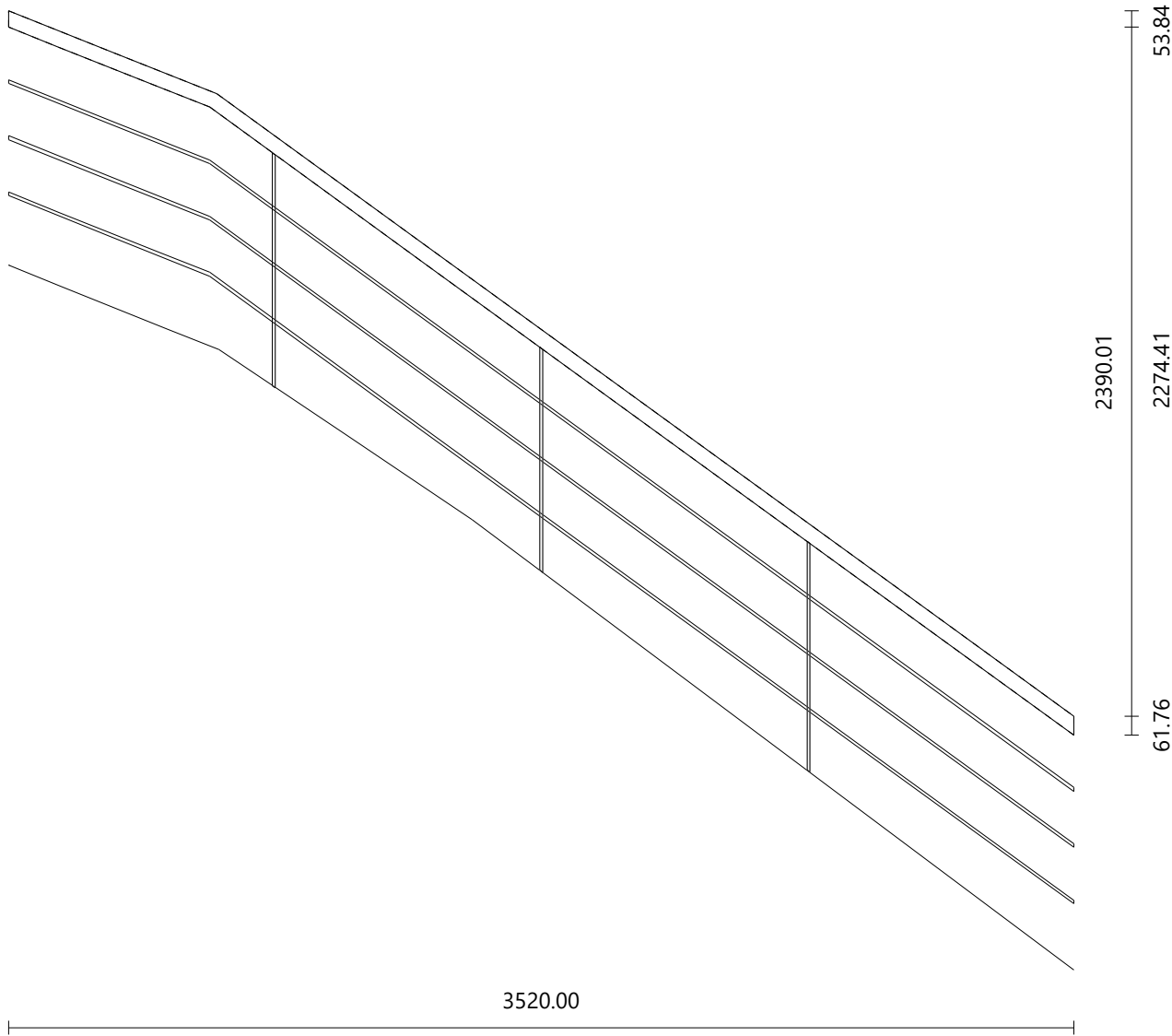


Material iron/fer
Dimensions 960.62 × 310.68 mm
Thickness 40.00 mm

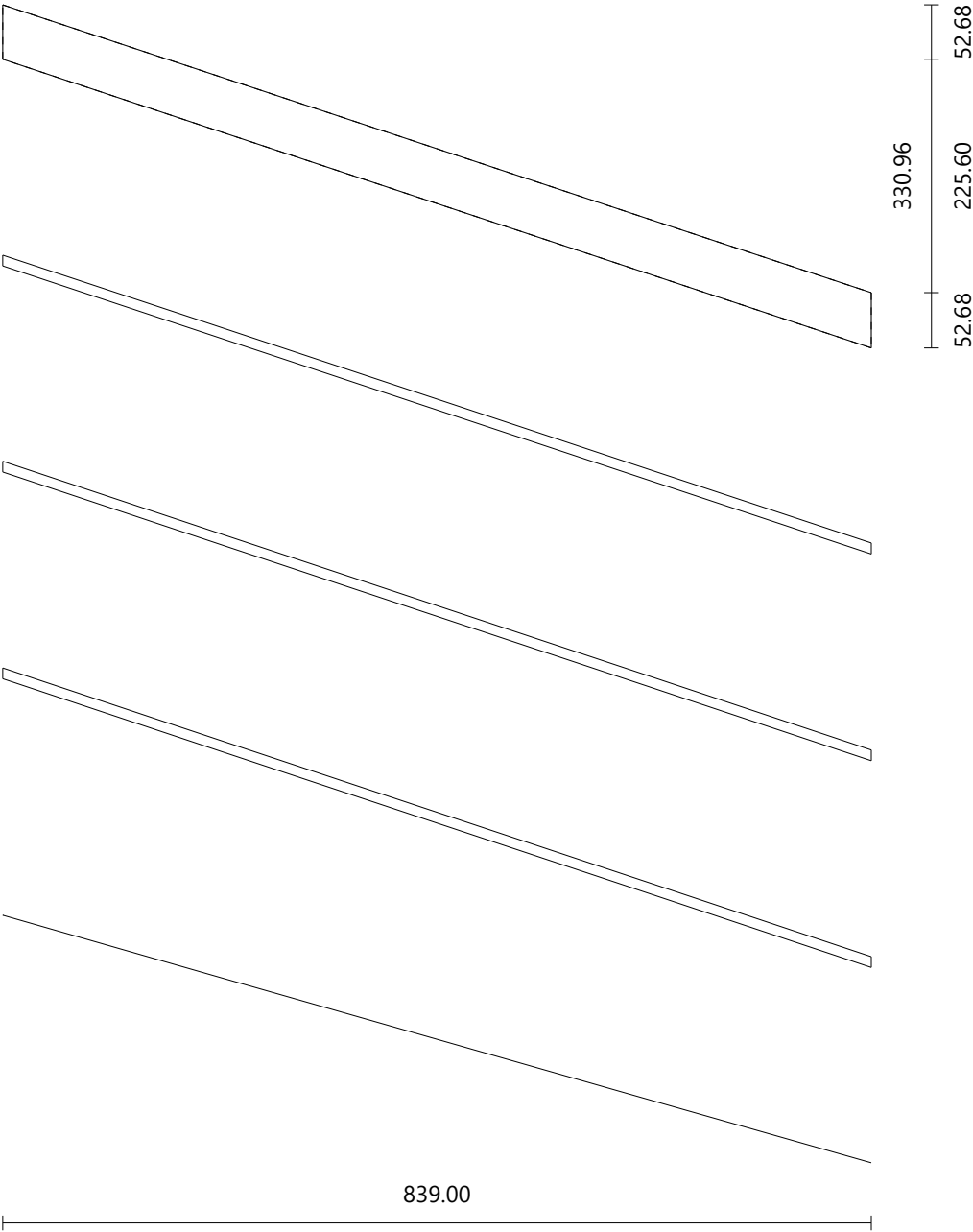




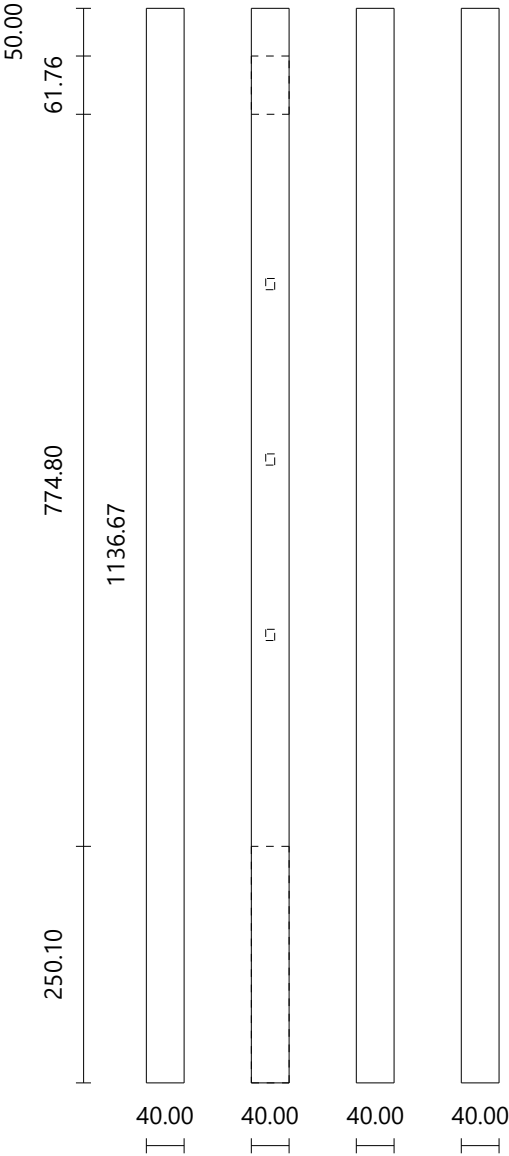
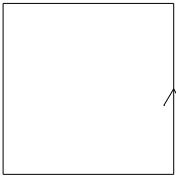
Material beech/hetre
 Dimensions 4254.47 × 196.46 mm
 Thickness 50.00 mm



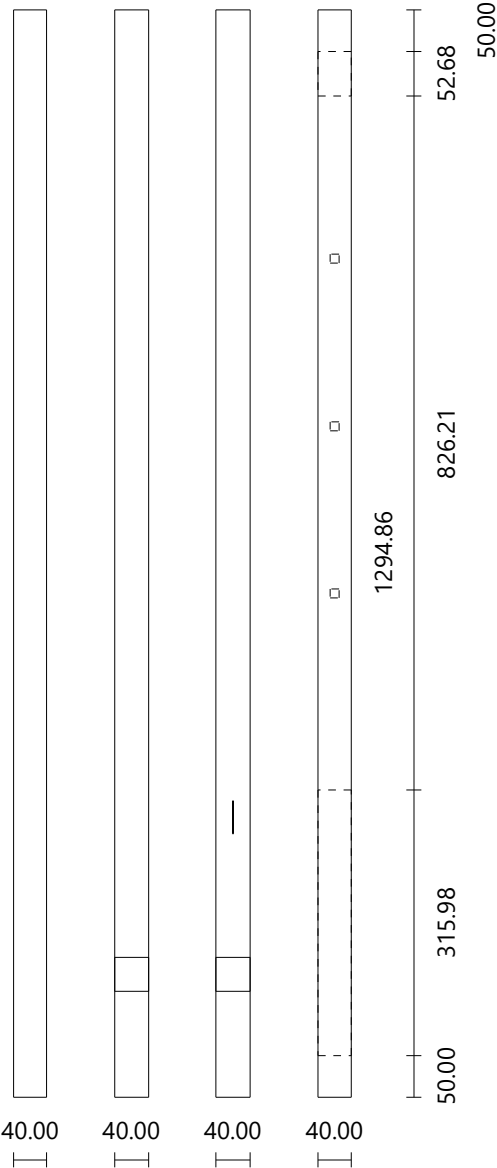
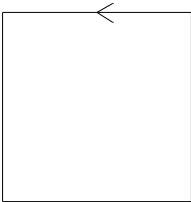
Material beech/hetre
Dimensions 900.53 × 50.00 mm
Thickness 50.00 mm



End Newel Post	Right Side	Flight: 1	Top View
Material	iron/fer		
Dimensions	40.00 × 40.00 mm		
Height	1136.67 mm		
Face 2	Right Handrail #1 Right Stringboard #1		



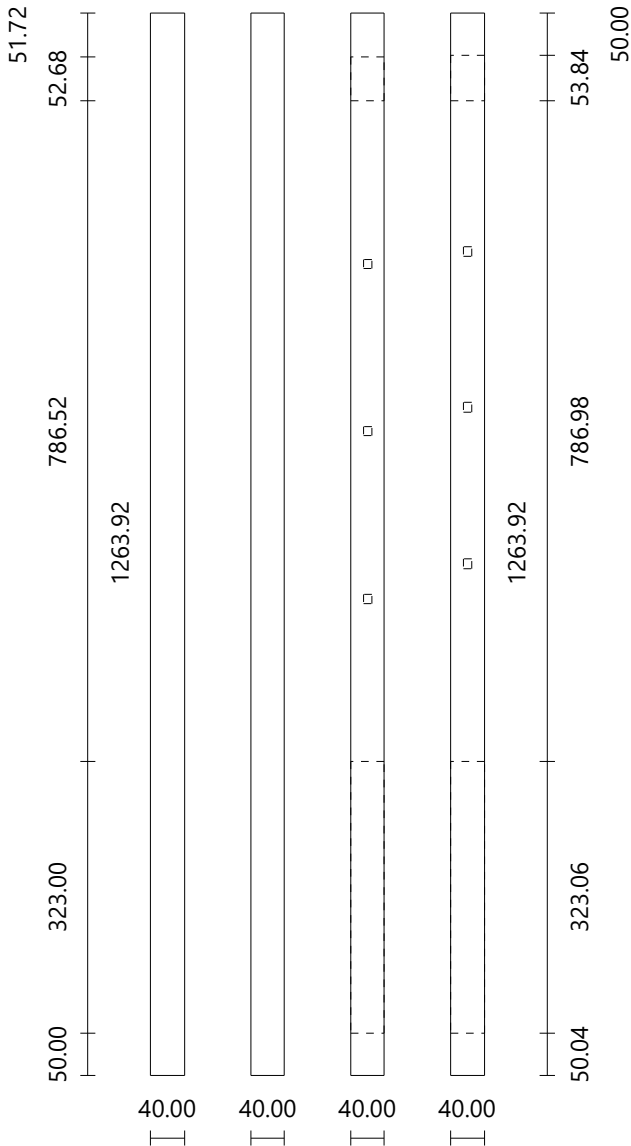
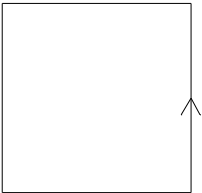
Corner Newel Post	Right Side	Flight: 2	Top View
Material	iron/fer		
Dimensions	40.00 × 40.00 mm		
Height	1294.86 mm		
Step #14	Height: 166.71 mm		
Step #15	Height: 353.38 mm		
Face 4	Right Handrail #2 Right Stringboard #2		



Corner Newel Post Right Side Flights: 1-2 Top View

Material iron/fer
Dimensions 40.00 × 40.00 mm
Height 1263.92 mm

Face 3 Right Handrail #2
 Right Stringboard #2
Face 4 Right Handrail #1
 Right Stringboard #1



Part	Material	Dimensions	Cutting List Volume	Real Volume
Step #1	beech/hetre	820.00 × 271.27 × 40.00	0.01 m ³	0.01 m ³
Step #2	beech/hetre	820.54 × 273.02 × 40.00	0.01 m ³	0.01 m ³
Step #3	beech/hetre	822.29 × 275.01 × 40.00	0.01 m ³	0.01 m ³
Step #4	beech/hetre	825.51 × 277.27 × 40.00	0.01 m ³	0.01 m ³
Step #5	beech/hetre	830.61 × 279.85 × 40.00	0.01 m ³	0.01 m ³
Step #6	beech/hetre	838.20 × 282.79 × 40.00	0.01 m ³	0.01 m ³
Step #7	beech/hetre	849.17 × 286.12 × 40.00	0.01 m ³	0.01 m ³
Step #8	beech/hetre	864.88 × 289.91 × 40.00	0.01 m ³	0.01 m ³
Step #9	beech/hetre	887.48 × 294.24 × 40.00	0.01 m ³	0.01 m ³
Step #10	beech/hetre	920.45 × 299.34 × 40.00	0.01 m ³	0.01 m ³
Step #11	beech/hetre	970.03 × 306.01 × 40.00	0.01 m ³	0.01 m ³
Step #12	beech/hetre	1073.73 × 370.21 × 40.00	0.02 m ³	0.01 m ³
Step #13	beech/hetre	1222.38 × 479.50 × 40.00	0.02 m ³	0.01 m ³
Step #14	beech/hetre	1014.62 × 484.21 × 40.00	0.02 m ³	0.01 m ³
Step #15	beech/hetre	860.00 × 1.00 × 40.00	0.00 m ³	0.00 m ³
Left Stringboard #1	iron/fer	3752.09 × 437.99 × 40.00	0.07 m ³	0.04 m ³
Right Stringboard #1	iron/fer	4357.25 × 425.71 × 40.00	0.07 m ³	0.05 m ³
Right Stringboard #2	iron/fer	960.62 × 310.68 × 40.00	0.01 m ³	0.01 m ³
Right Handrail #1	beech/hetre	4254.47 × 196.46 × 50.00	0.04 m ³	0.01 m ³
Right Handrail #2	beech/hetre	900.53 × 50.00 × 50.00	0.00 m ³	0.00 m ³
Newel Post #1	iron/fer	40.00 × 40.00 × 1136.67	0.00 m ³	0.00 m ³
Newel Post #2	iron/fer	40.00 × 40.00 × 1294.86	0.00 m ³	0.00 m ³
Newel Post #3	iron/fer	40.00 × 40.00 × 1263.92	0.00 m ³	0.00 m ³
Tube Rail Post #1	sans nom	10.00 × 10.00 × 762.83	0.00 m ³	0.00 m ³
Tube Rail Post #2	sans nom	10.00 × 10.00 × 743.39	0.00 m ³	0.00 m ³
Tube Rail Post #3	sans nom	10.00 × 10.00 × 773.86	0.00 m ³	0.00 m ³
Tube Rail #1	sans nom	156.24 × 4231.34 × 10.00	0.01 m ³	0.00 m ³
Tube Rail #2	sans nom	156.24 × 4231.34 × 10.00	0.01 m ³	0.00 m ³
Tube Rail #3	sans nom	156.24 × 4231.34 × 10.00	0.01 m ³	0.00 m ³
Tube Rail #4	sans nom	10.00 × 887.26 × 10.00	0.00 m ³	0.00 m ³
Tube Rail #5	sans nom	10.00 × 887.26 × 10.00	0.00 m ³	0.00 m ³
Tube Rail #6	sans nom	10.00 × 887.26 × 10.00	0.00 m ³	0.00 m ³

Part	Material	Cutting List Volume	Real Volume	Weight	Price
Steps	beech/hetre	0.17 m ³	0.13 m ³	90.61 kg	876,53 €
Stringboards	iron/fer	0.15 m ³	0.10 m ³	260.07 kg	379,68 €
Handrails	beech/hetre	0.04 m ³	0.01 m ³	8.84 kg	231,22 €
Newel Posts	iron/fer	0.01 m ³	0.01 m ³	14.78 kg	14,78 €
Tube Rail Posts	sans nom	0.00 m ³	0.00 m ³		
Tube Rails	sans nom	0.02 m ³	0.00 m ³		
Total		0.39 m³	0.25 m³	374.30 kg	1.502,21 €