

Multi-Flight Stair

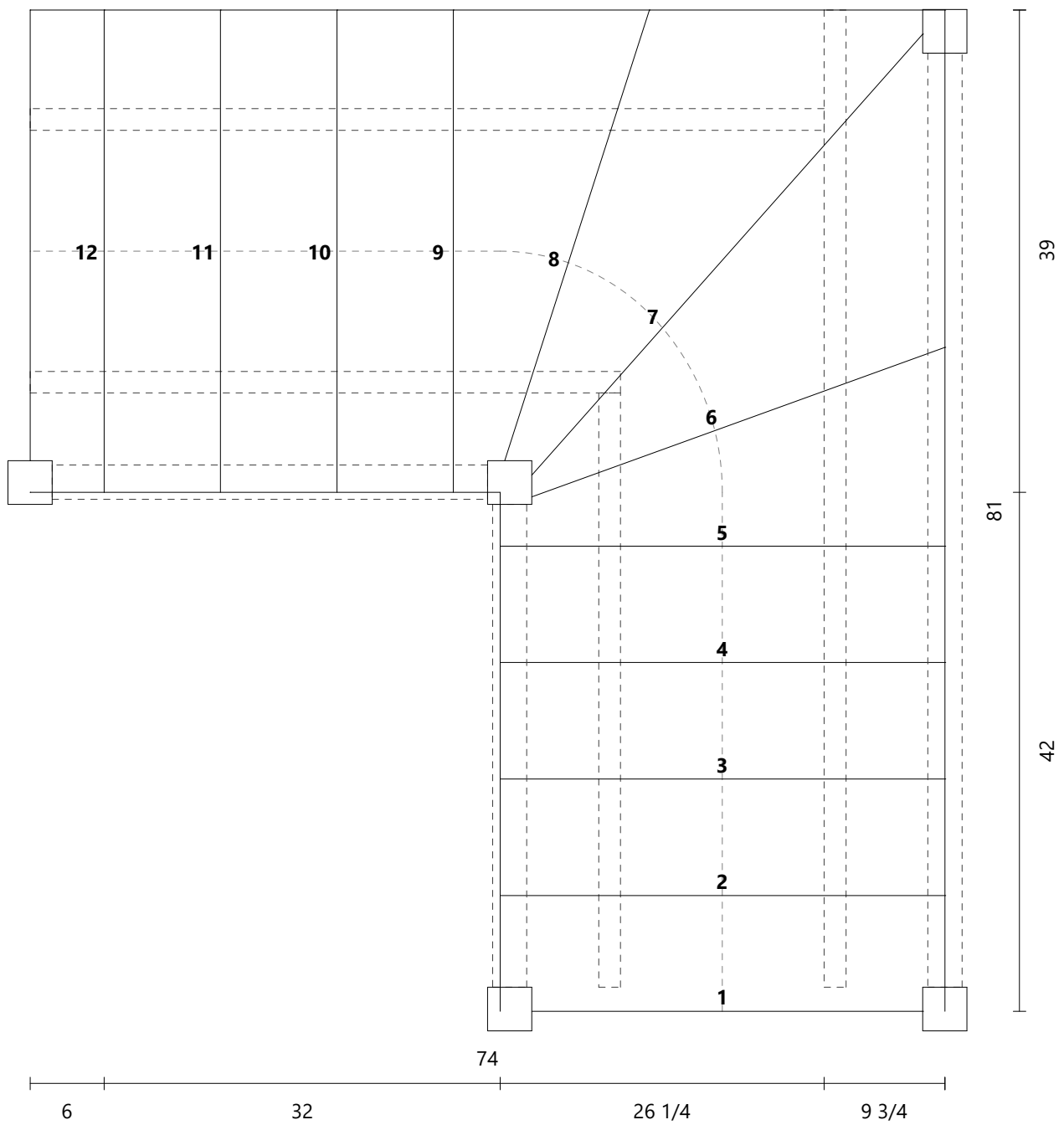
Risers 12

Floor Height 89"

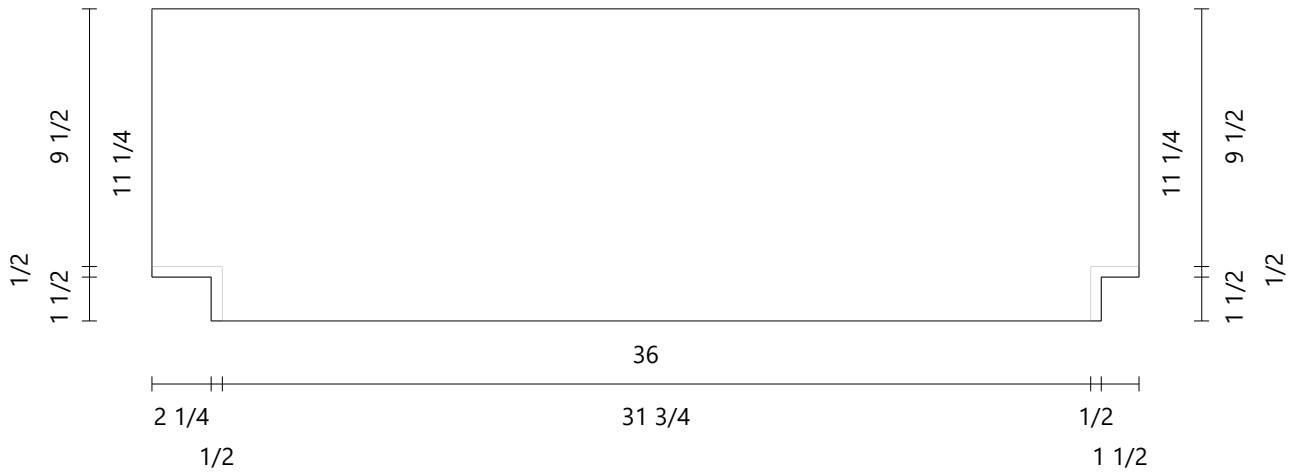
Riser Height 7 1/2"

Tread Width 9 1/2"

Stair Rule 24 1/4"



Material beech/hetre
Dimensions 36" × 11 1/4"
Thickness 1 3/4"



Material beech/hetre
Dimensions 36" × 11 1/4"
Thickness 1 3/4"



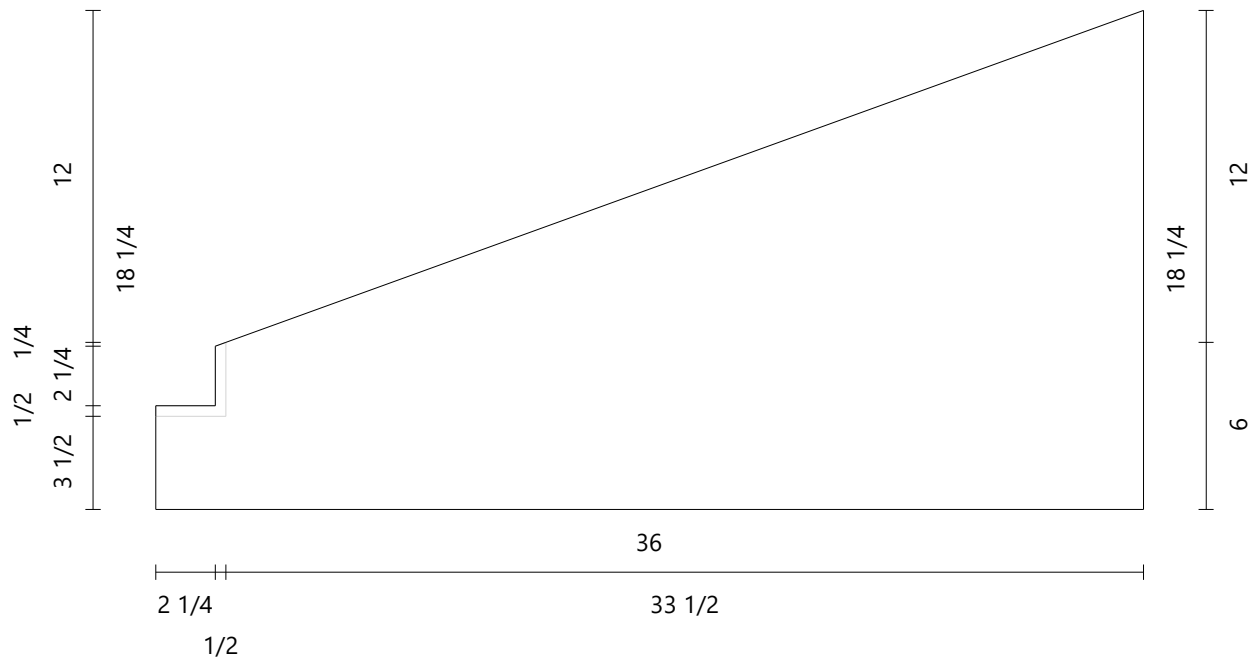
Material beech/hetre
Dimensions 36" × 11 1/4"
Thickness 1 3/4"



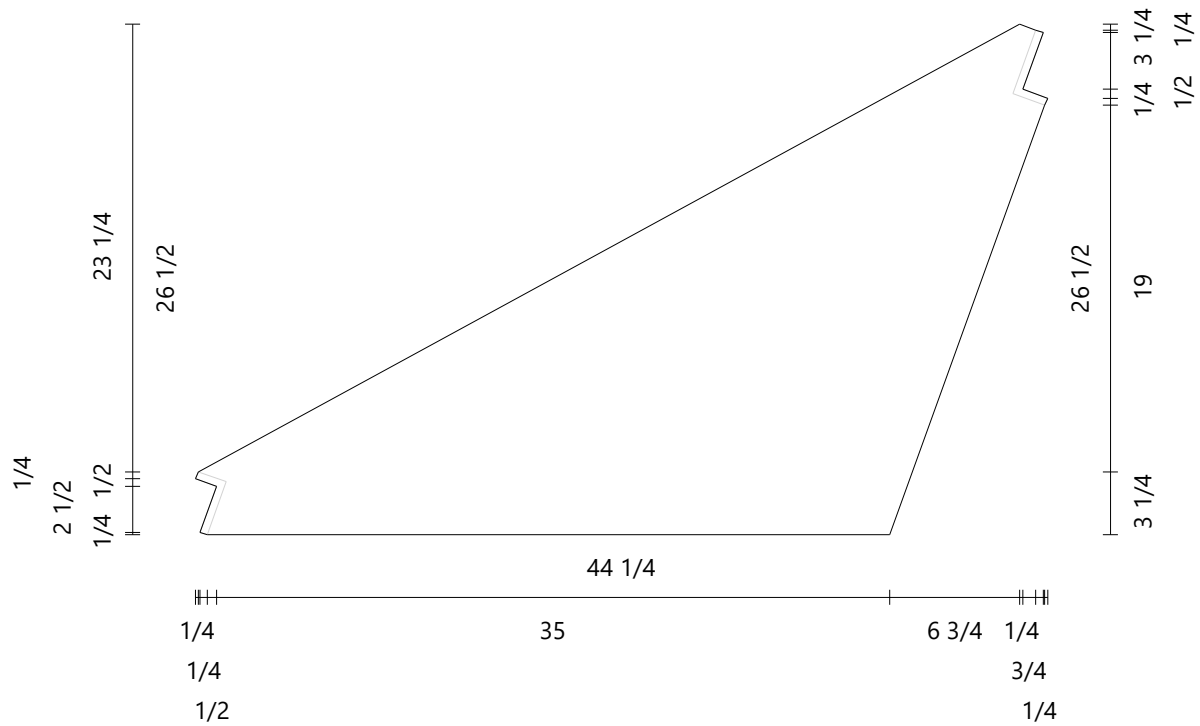
Material beech/hetre
Dimensions 36" × 11 1/4"
Thickness 1 3/4"



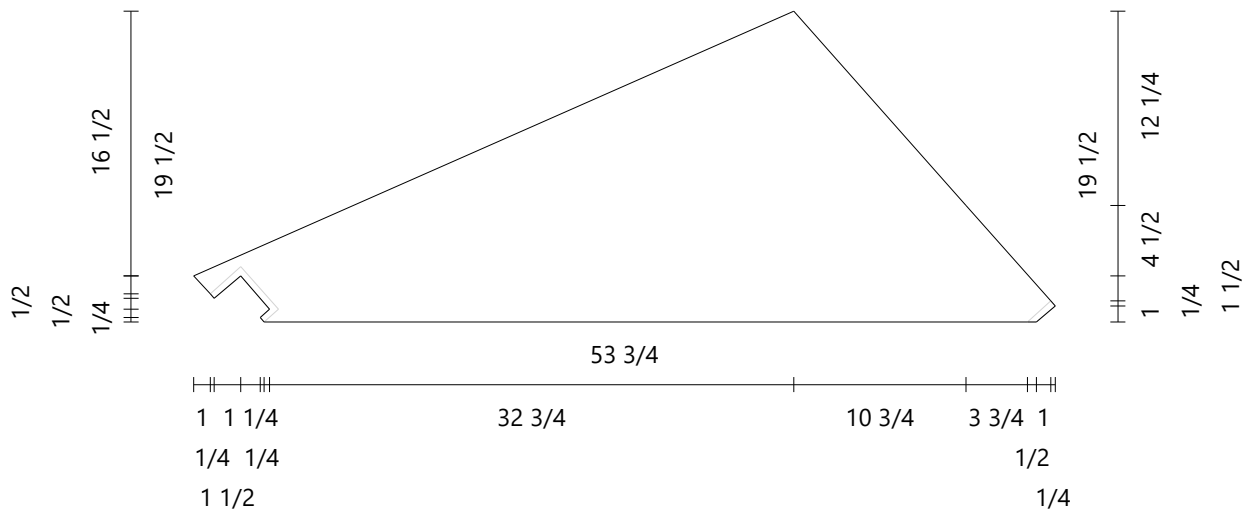
Material beech/hetre
Dimensions 36" × 18 1/4"
Thickness 1 3/4"



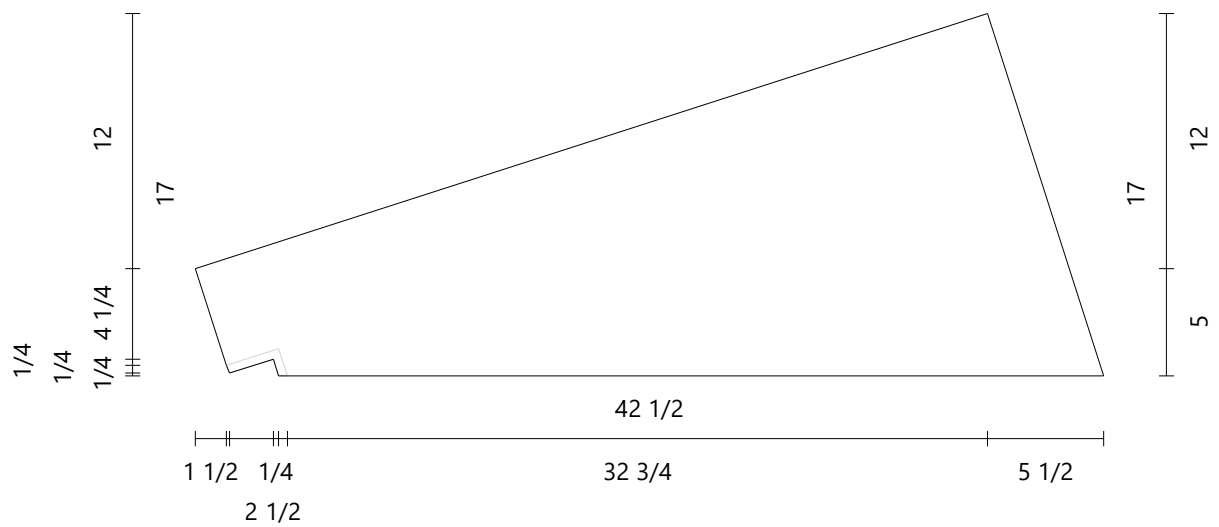
Material	beech/hetre
Dimensions	44 1/4" x 26 1/2"
Thickness	1 3/4"



Material beech/hetre
Dimensions $53 \frac{3}{4}" \times 19 \frac{1}{2}"$
Thickness $1 \frac{3}{4}"$



Material beech/hetre
Dimensions 42 1/2" x 17"
Thickness 1 3/4"



Material beech/hetre
Dimensions 39" × 11 1/4"
Thickness 1 3/4"



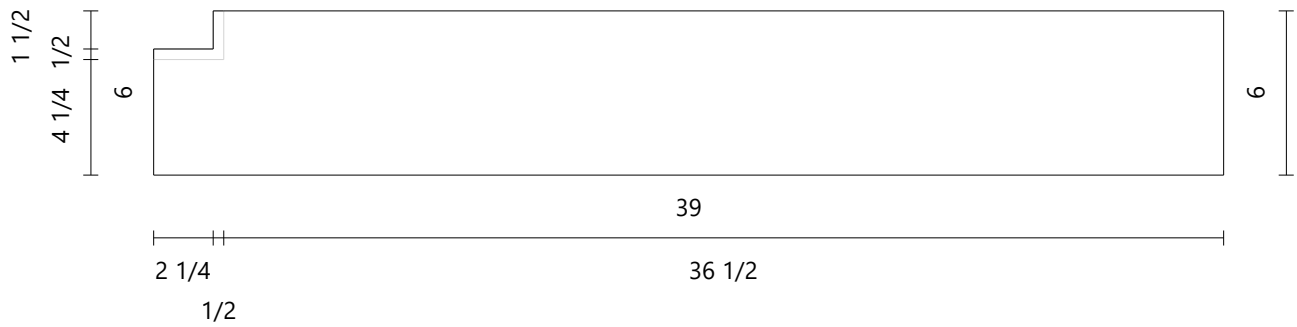
Material beech/hetre
Dimensions 39" × 11 1/4"
Thickness 1 3/4"

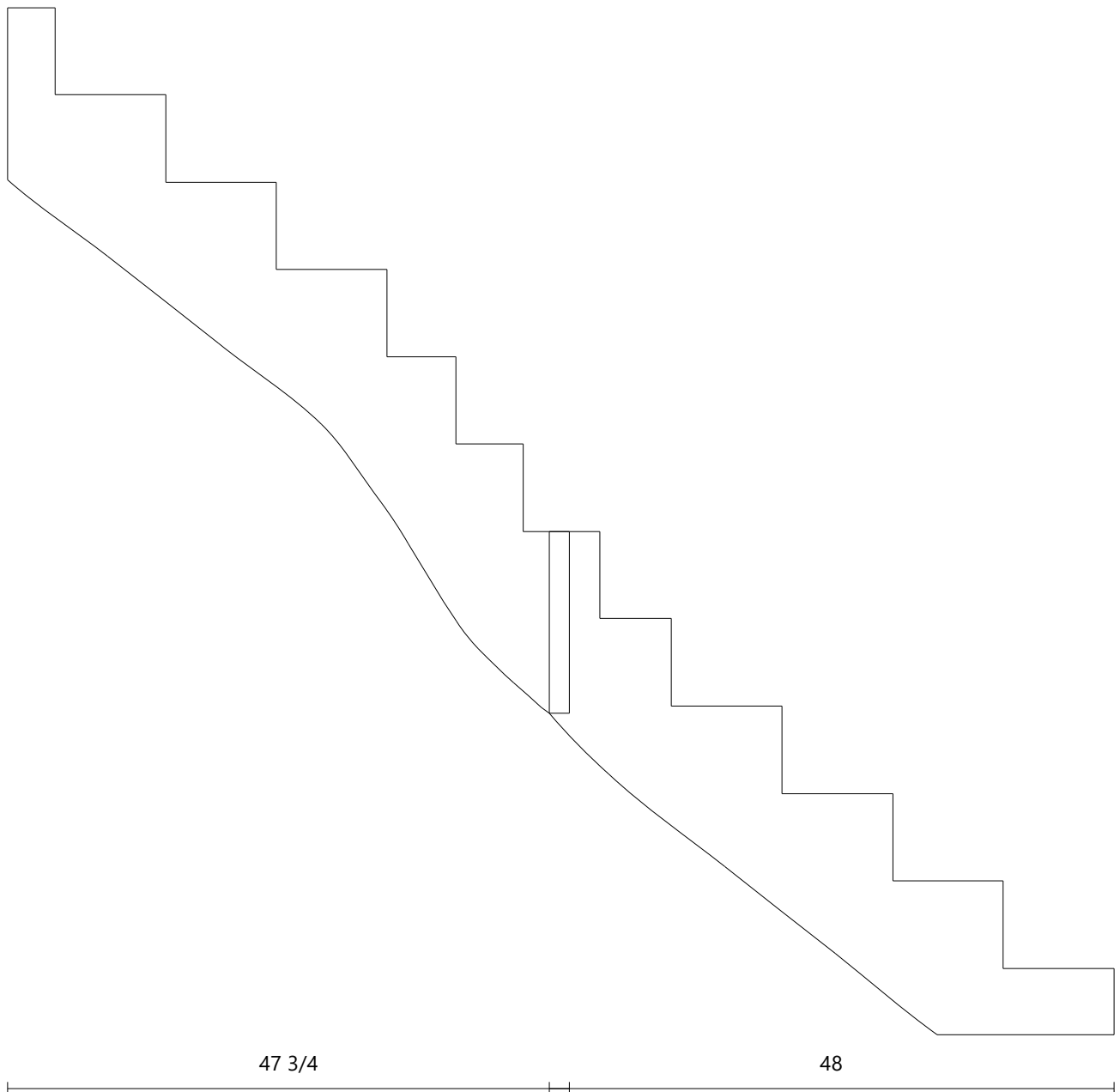


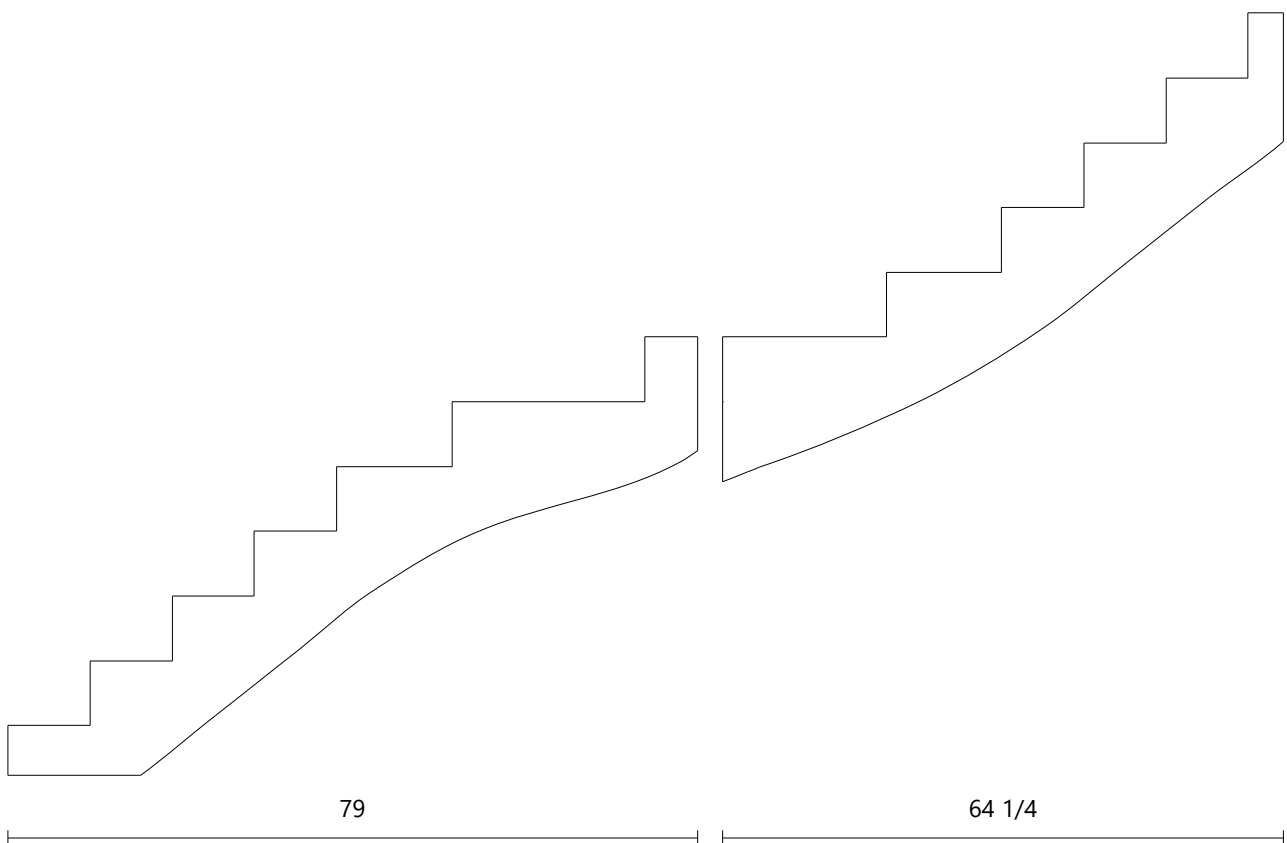
Material beech/hetre
Dimensions 39" × 11 1/4"
Thickness 1 3/4"



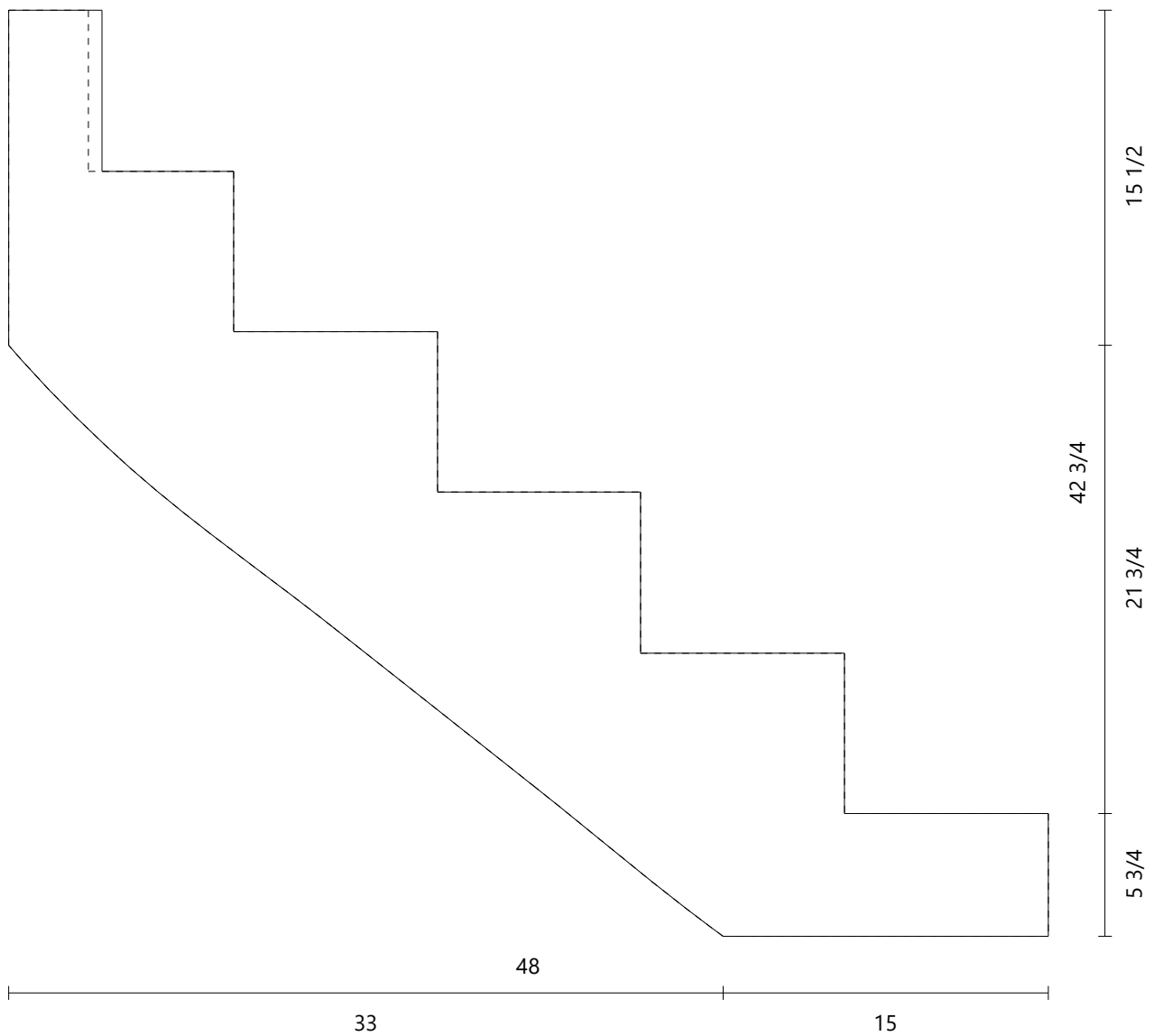
Material beech/hetre
Dimensions 39" × 6"
Thickness 1 3/4"



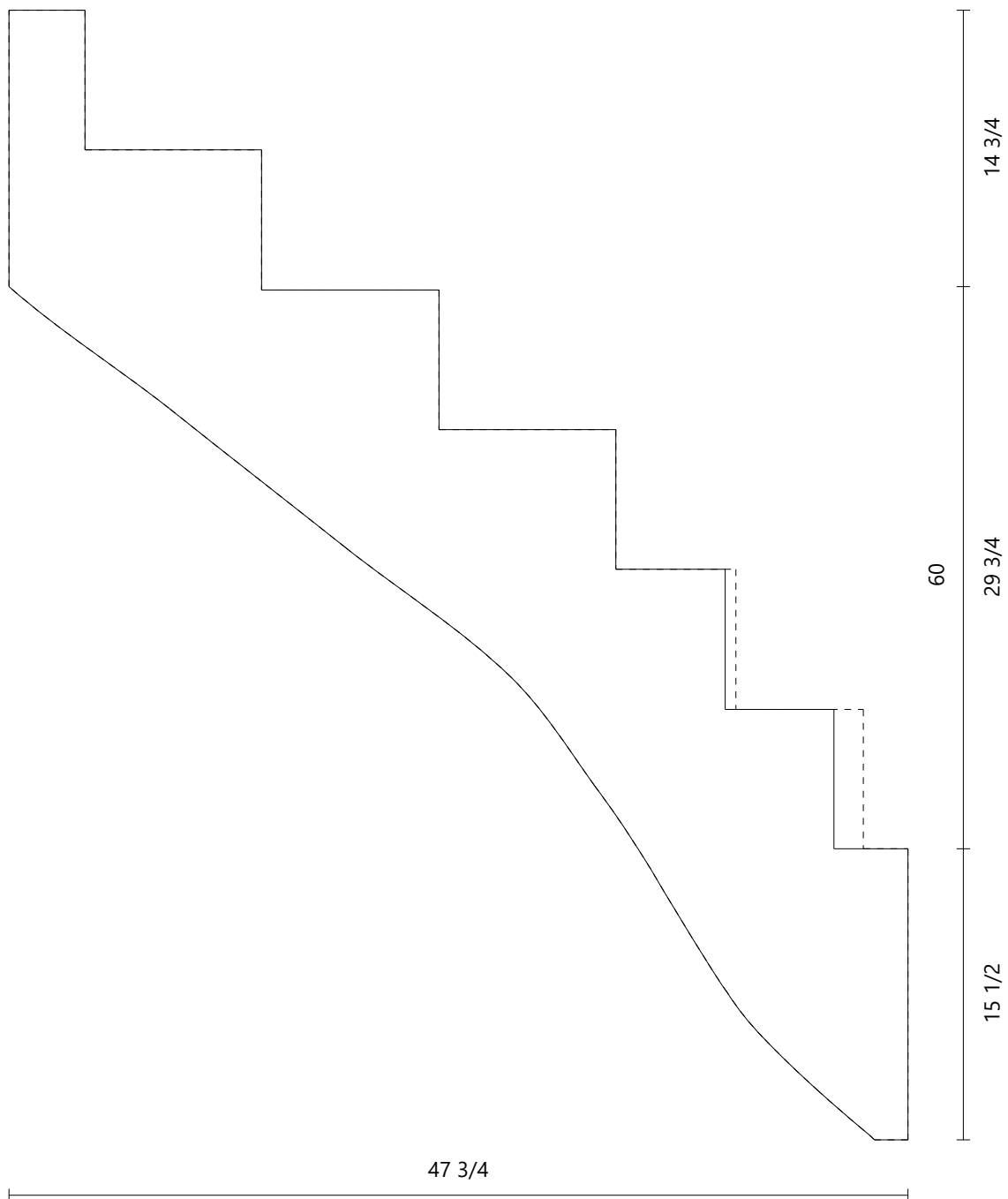




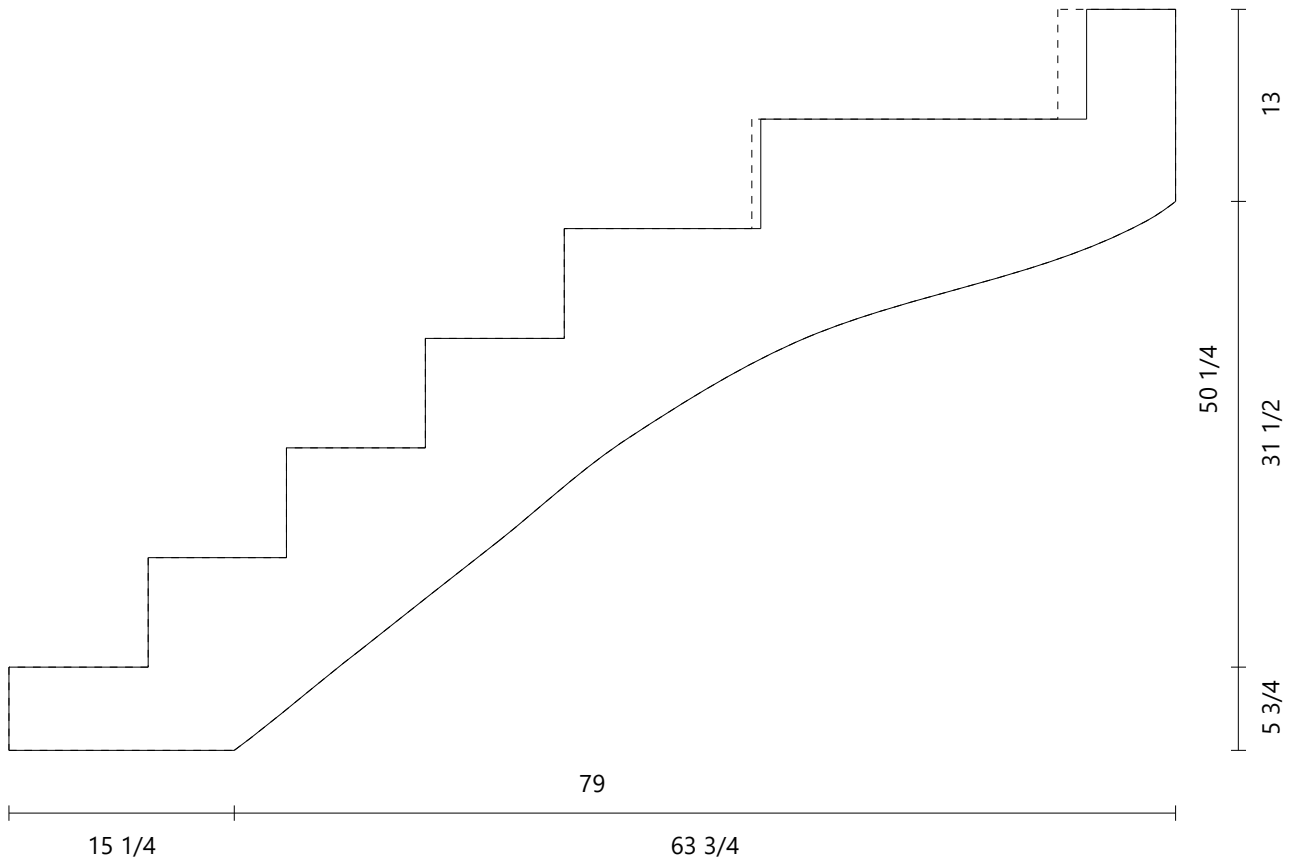
Material beech/hetre
Dimensions 64 1/4" × 15 1/4"
Thickness 1 3/4"



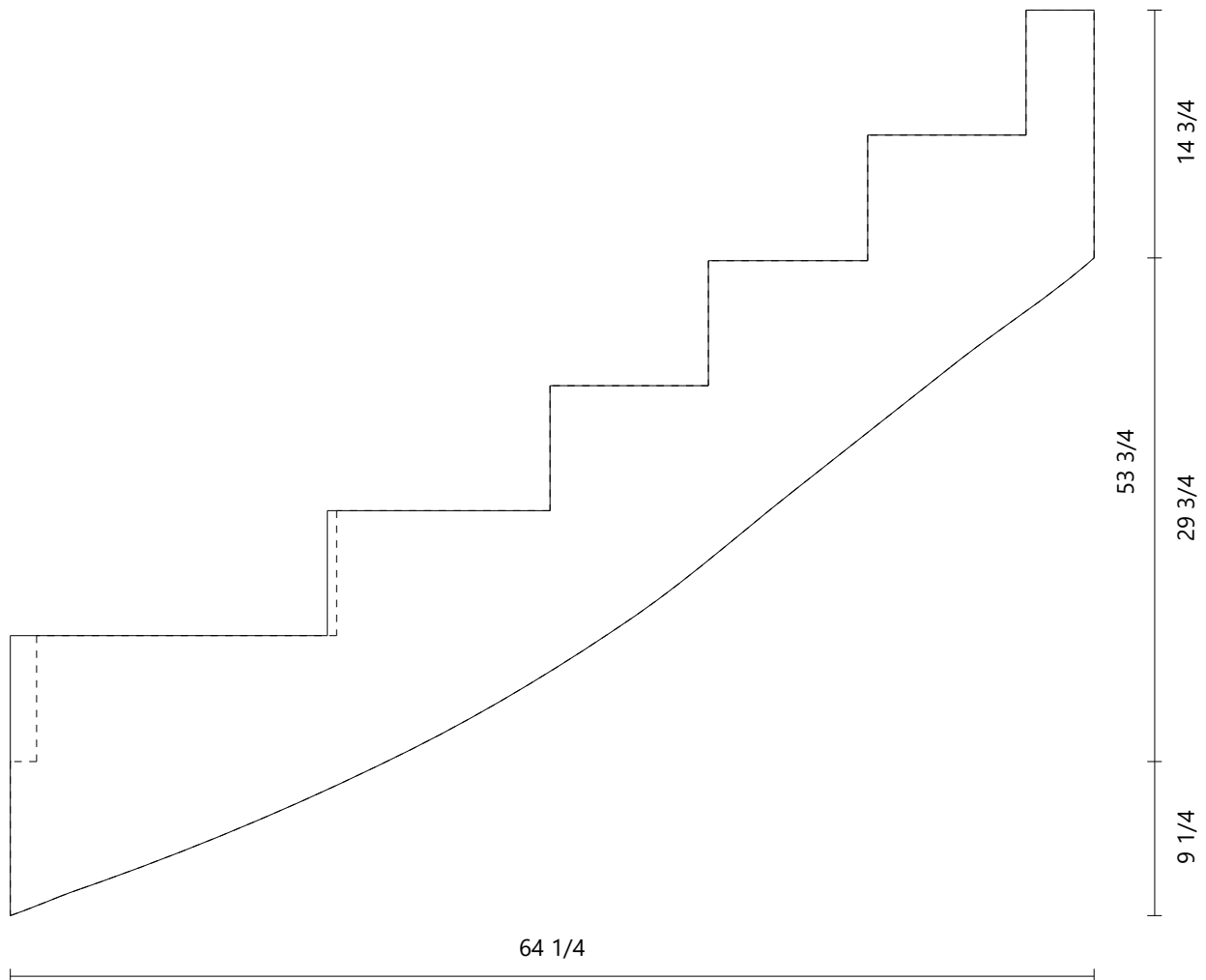
Material beech/hetre
Dimensions 76 1/4" × 17 1/4"
Thickness 1 3/4"

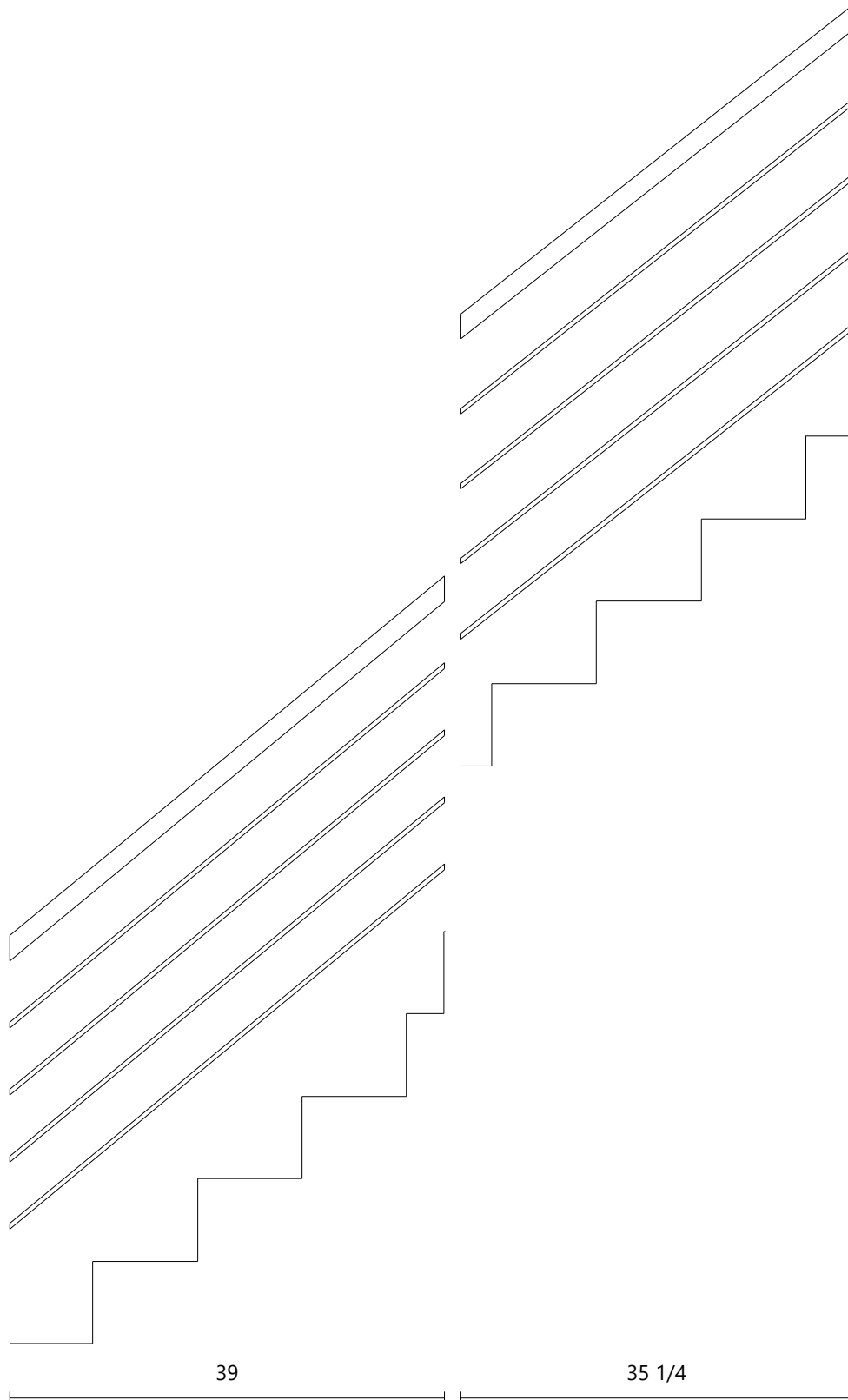


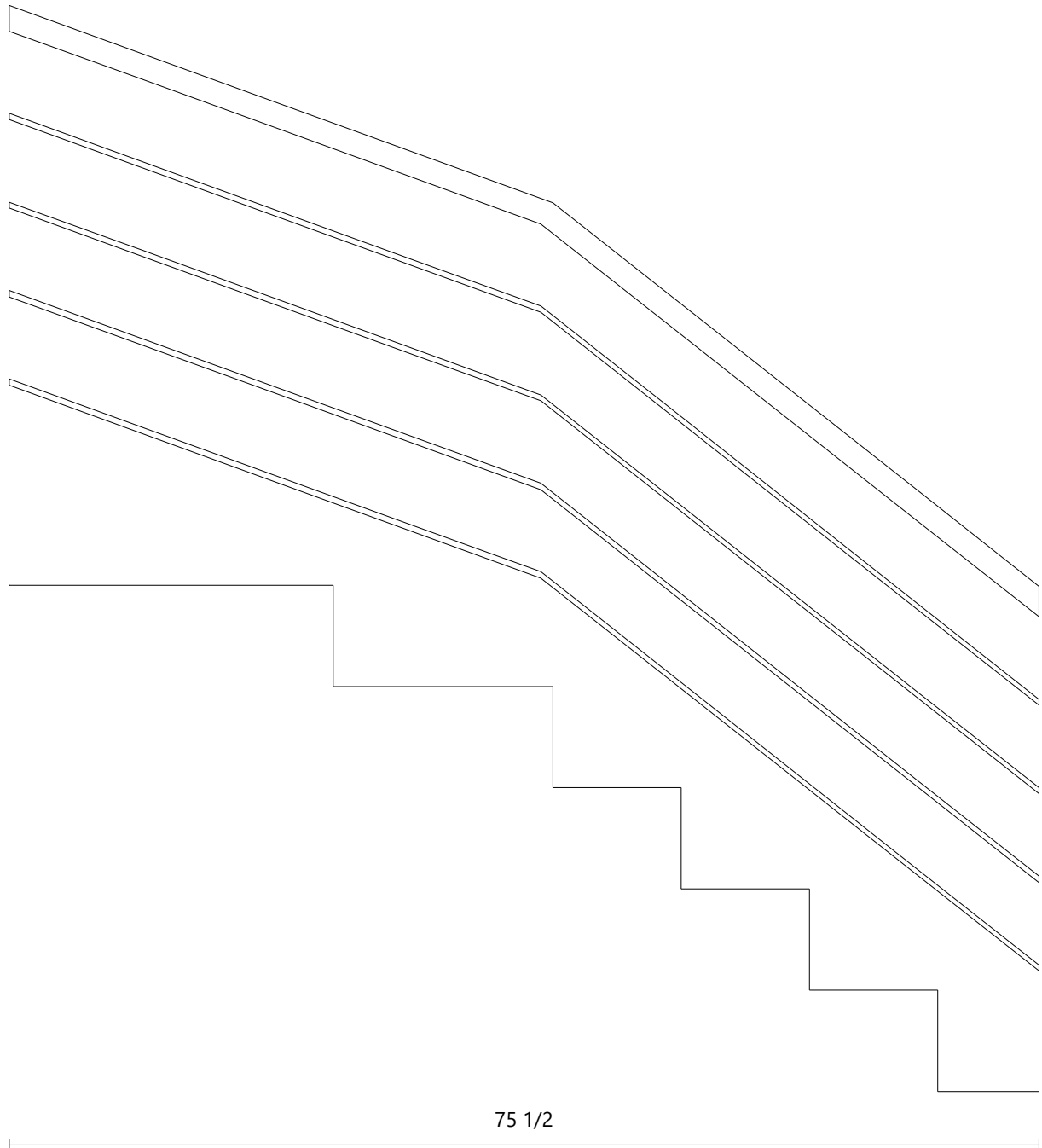
Material beech/hetre
Dimensions $93\frac{1}{2}" \times 19\frac{1}{2}"$
Thickness $1\frac{3}{4}"$



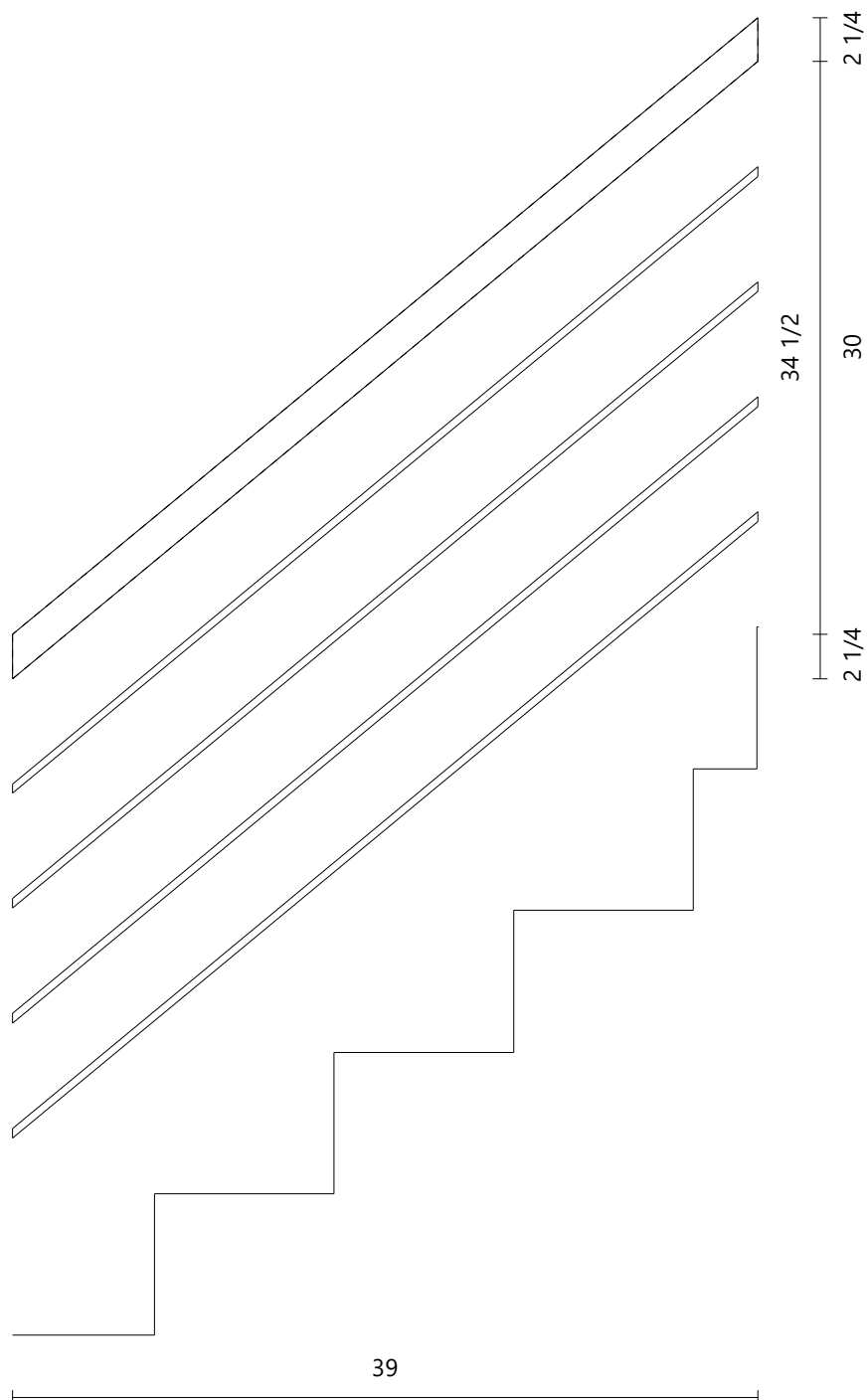
Material beech/hetre
Dimensions $82 \frac{3}{4}" \times 18 \frac{1}{2}"$
Thickness $1 \frac{3}{4}"$



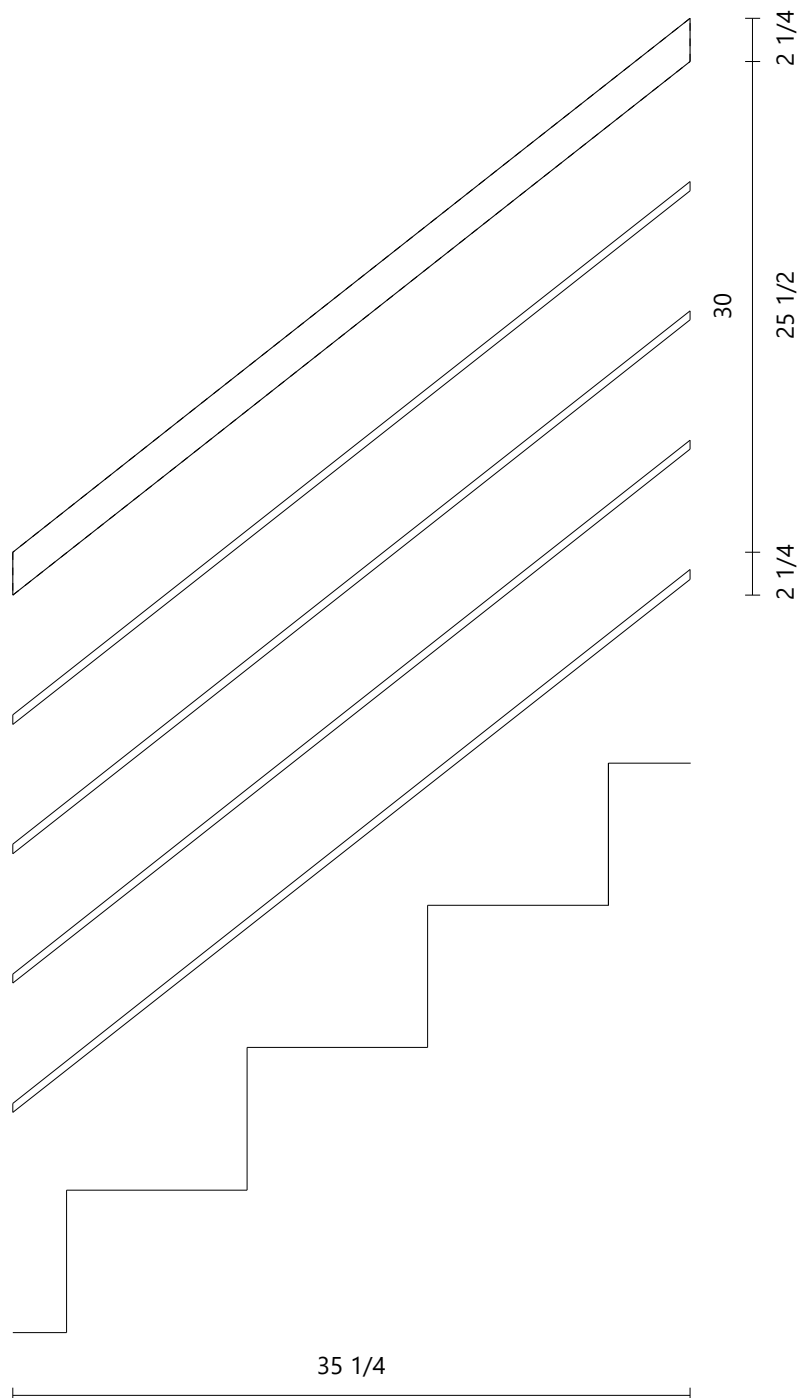




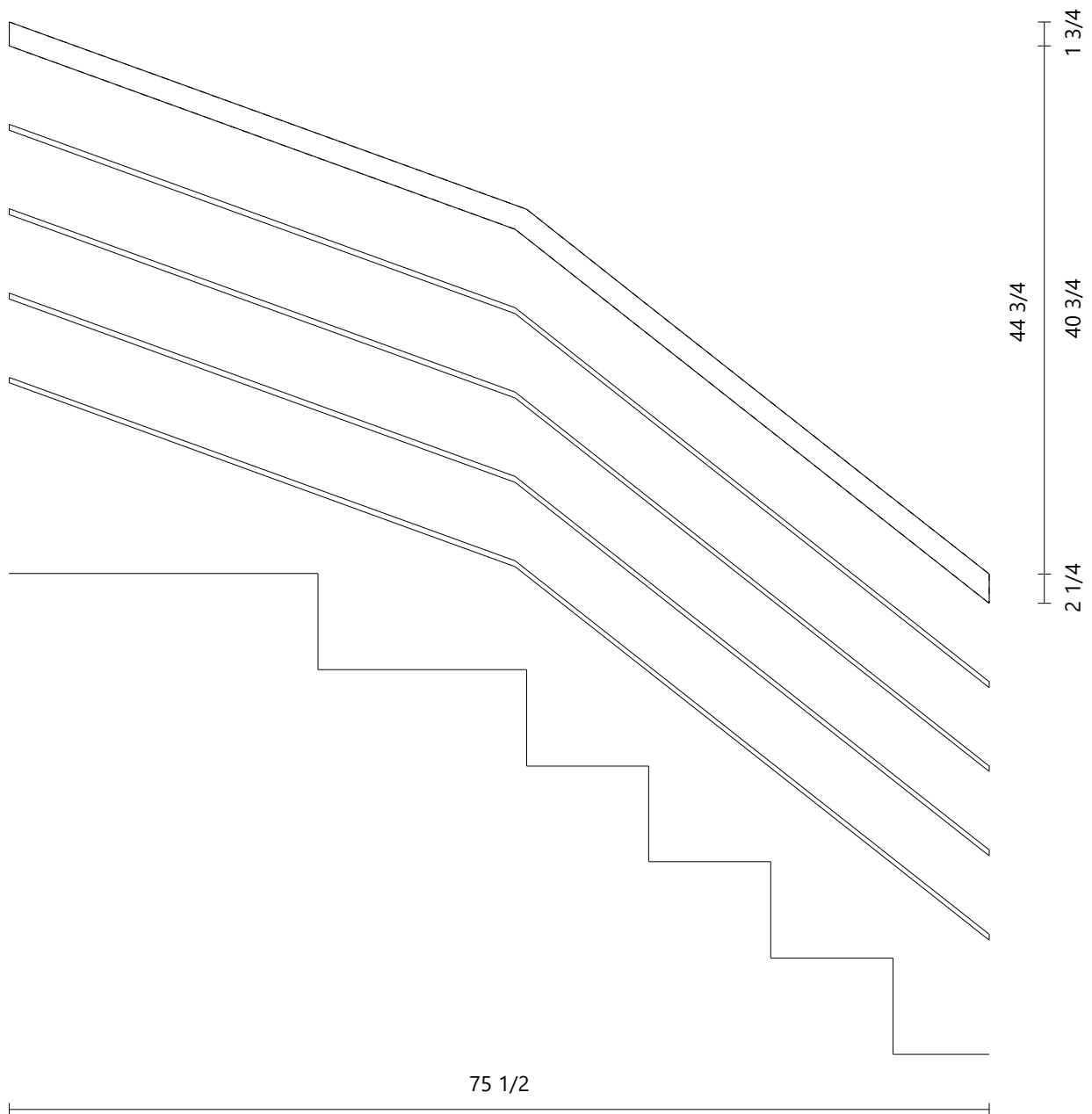
Material beech/hetre
Dimensions 52 1/4" x 1 3/4"
Thickness 2 3/4"



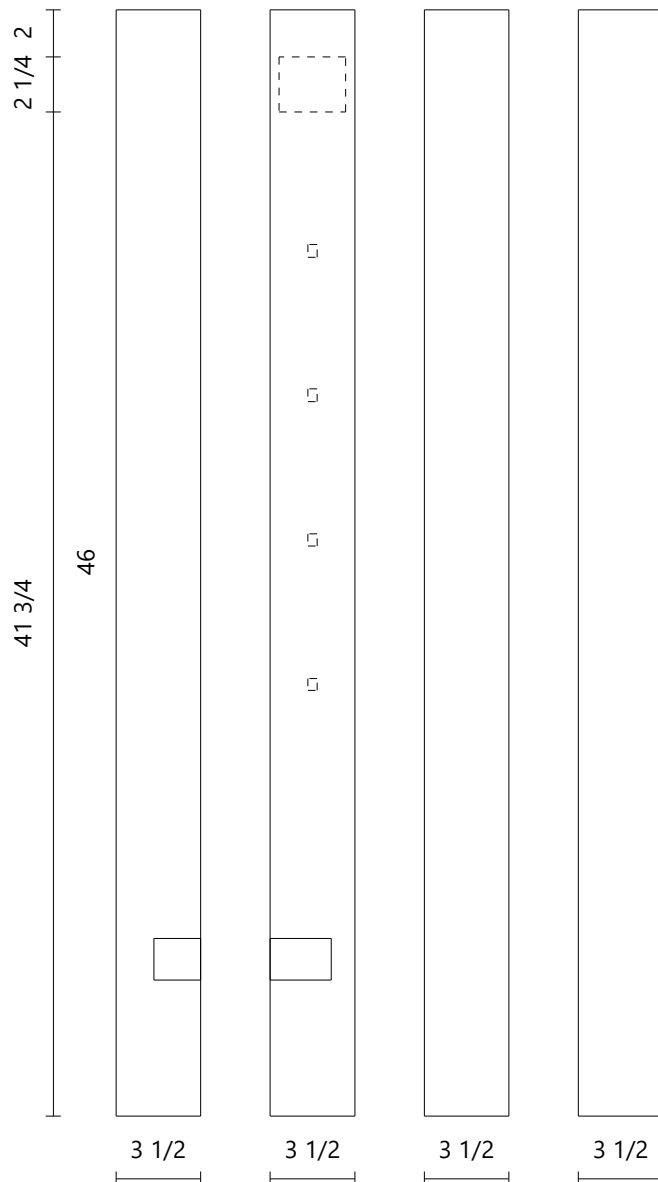
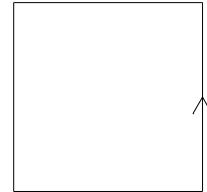
Material	beech/hetre
Dimensions	46 1/4" x 1 3/4"
Thickness	2 3/4"



Material beech/hetre
Dimensions 87 3/4" × 8 3/4"
Thickness 2 3/4"



End Newel Post	Left Side	Flight: 1	Top View
Material	beech/hetre		
Dimensions	3 1/2" x 3 1/2"		
Height	46"		
Step #1	Height: 7 1/2"		
Face 2	Left Handrail #1		



Corner Newel Post

Left Side

Flights: 1-2

Top View

Material
Dimensions
Height

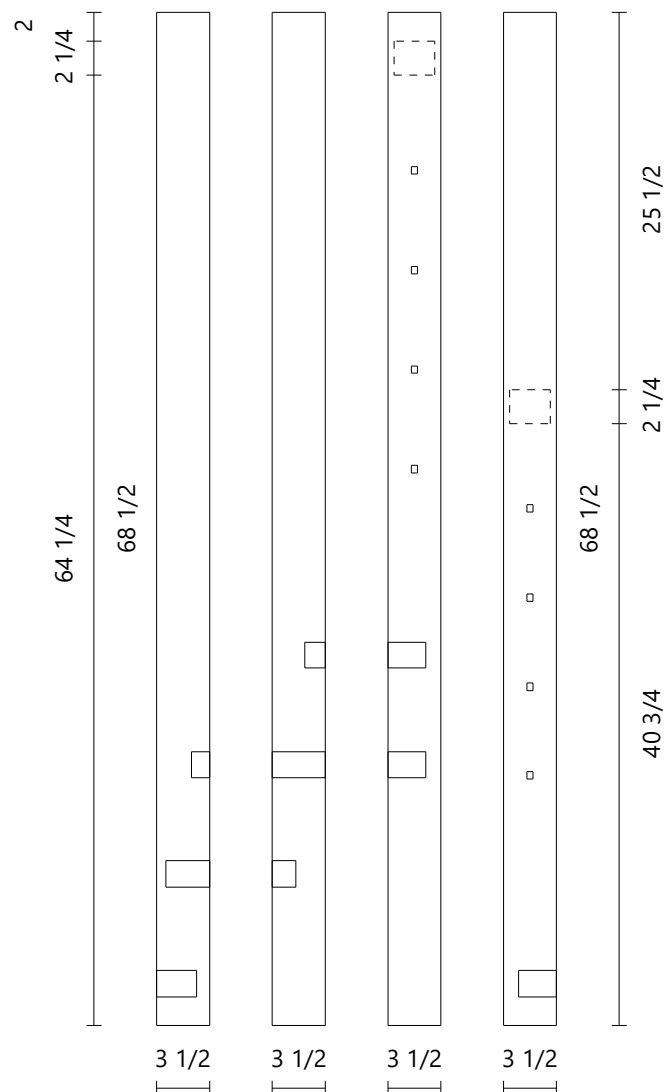
beech/hetre
 $3\frac{1}{2}" \times 3\frac{1}{2}"$
 $68\frac{1}{2}"$

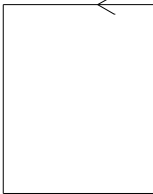
Step #5
Step #6
Step #7
Step #8

Height: $3\frac{3}{4}"$
Height: $11\frac{1}{4}"$
Height: $18\frac{1}{2}"$
Height: $26"$

Face 3
Face 4

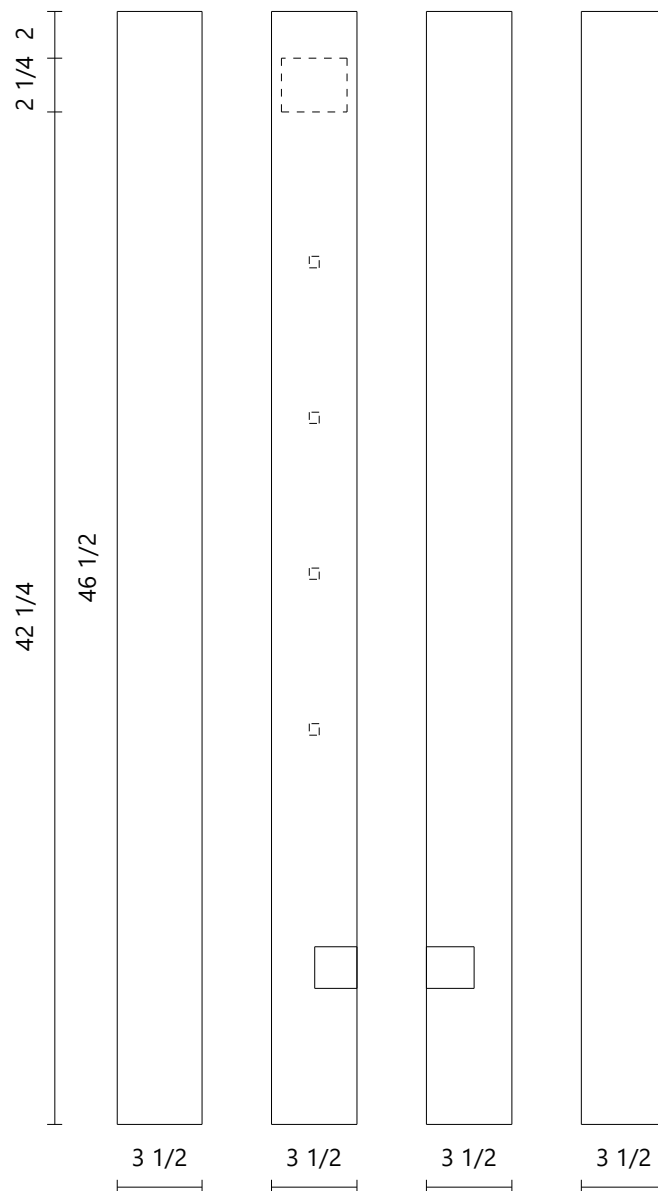
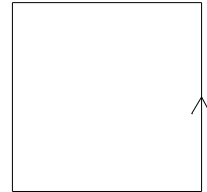
Left Handrail #2
Left Handrail #1



End Newel Post	Left Side	Landing: 1	Top View
Material	beech/hetre		
Dimensions	3 1/2" x 3 1/2"		
Height	44 1/2"		
Step #12	Height: 3 3/4"		
Face 4	Left Handrail #2		



End Newel Post	Right Side	Flight: 1	Top View
Material	beech/hetre		
Dimensions	3 1/2" × 3 1/2"		
Height	46 1/2"		
Step #1	Height: 7 1/2"		
Face 2	Right Handrail #1		



Corner Newel Post

Right Side

Flights: 1-2

Top View

Material
Dimensions
Height

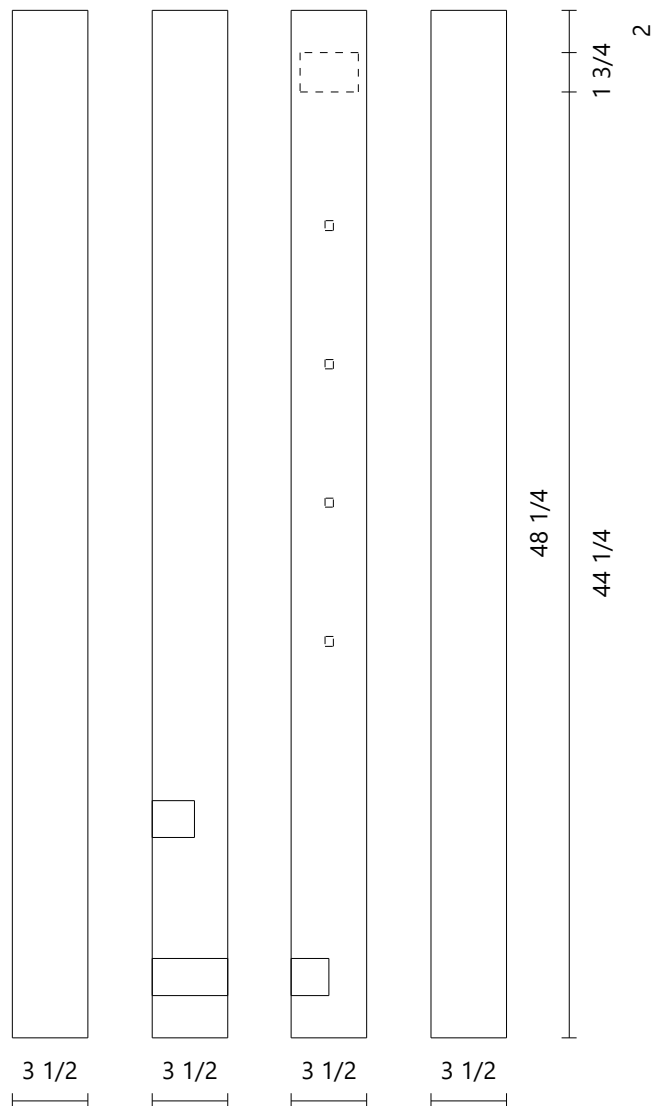
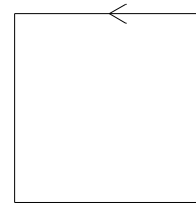
beech/hetre
 $3\frac{1}{2}" \times 3\frac{1}{2}"$
 $48\frac{1}{4}"$

Step #6
Step #7

Height: $3\frac{3}{4}"$
Height: $11\frac{1}{4}"$

Face 3

Right Handrail #1



Part	Material	Dimensions	Cutting List Volume	Real Volume
Step #1	beech/hetre	36 × 11 1/4 × 1 3/4	0.01 m ³	0.01 m ³
Step #2	beech/hetre	36 × 11 1/4 × 1 3/4	0.01 m ³	0.01 m ³
Step #3	beech/hetre	36 × 11 1/4 × 1 3/4	0.01 m ³	0.01 m ³
Step #4	beech/hetre	36 × 11 1/4 × 1 3/4	0.01 m ³	0.01 m ³
Step #5	beech/hetre	36 × 18 1/4 × 1 3/4	0.02 m ³	0.01 m ³
Step #6	beech/hetre	44 1/4 × 26 1/2 × 1 3/4	0.03 m ³	0.02 m ³
Step #7	beech/hetre	53 3/4 × 19 1/2 × 1 3/4	0.03 m ³	0.02 m ³
Step #8	beech/hetre	42 1/2 × 17 × 1 3/4	0.02 m ³	0.01 m ³
Step #9	beech/hetre	39 × 11 1/4 × 1 3/4	0.01 m ³	0.01 m ³
Step #10	beech/hetre	39 × 11 1/4 × 1 3/4	0.01 m ³	0.01 m ³
Step #11	beech/hetre	39 × 11 1/4 × 1 3/4	0.01 m ³	0.01 m ³
Step #12	beech/hetre	39 × 6 × 1 3/4	0.01 m ³	0.01 m ³
Left Cut String #1	beech/hetre	64 1/4 × 15 1/4 × 1 3/4	0.03 m ³	0.02 m ³
Left Cut String #2	beech/hetre	76 1/4 × 17 1/4 × 1 3/4	0.04 m ³	0.02 m ³
Right Cut String #1	beech/hetre	93 1/2 × 19 1/2 × 1 3/4	0.05 m ³	0.03 m ³
Right Cut String #2	beech/hetre	82 3/4 × 18 1/2 × 1 3/4	0.04 m ³	0.02 m ³
Left Handrail #1	beech/hetre	52 1/4 × 1 3/4 × 2 3/4	0.00 m ³	0.00 m ³
Left Handrail #2	beech/hetre	46 1/4 × 1 3/4 × 2 3/4	0.00 m ³	0.00 m ³
Right Handrail #1	beech/hetre	87 3/4 × 8 3/4 × 2 3/4	0.03 m ³	0.01 m ³
Newel Post #1	beech/hetre	3 1/2 × 3 1/2 × 46	0.01 m ³	0.01 m ³
Newel Post #2	beech/hetre	3 1/2 × 3 1/2 × 68 1/2	0.01 m ³	0.01 m ³
Newel Post #3	beech/hetre	3 1/2 × 3 1/2 × 44 1/2	0.01 m ³	0.01 m ³
Newel Post #4	beech/hetre	3 1/2 × 3 1/2 × 46 1/2	0.01 m ³	0.01 m ³
Newel Post #5	beech/hetre	3 1/2 × 3 1/2 × 48 1/4	0.01 m ³	0.01 m ³
Tube Rail #1		51 × 1/2 × 1/2	0.00 m ³	0.00 m ³
Tube Rail #2		51 × 1/2 × 1/2	0.00 m ³	0.00 m ³
Tube Rail #3		51 × 1/2 × 1/2	0.00 m ³	0.00 m ³
Tube Rail #4		51 × 1/2 × 1/2	0.00 m ³	0.00 m ³
Tube Rail #5		45 1/4 × 1/2 × 1/2	0.00 m ³	0.00 m ³
Tube Rail #6		45 1/4 × 1/2 × 1/2	0.00 m ³	0.00 m ³
Tube Rail #7		45 1/4 × 1/2 × 1/2	0.00 m ³	0.00 m ³
Tube Rail #8		45 1/4 × 1/2 × 1/2	0.00 m ³	0.00 m ³
Tube Rail #9		7 1/2 × 87 × 1/2	0.00 m ³	0.00 m ³
Tube Rail #10		7 1/2 × 87 × 1/2	0.00 m ³	0.00 m ³
Tube Rail #11		7 1/2 × 87 × 1/2	0.00 m ³	0.00 m ³
Tube Rail #12		7 1/2 × 87 × 1/2	0.00 m ³	0.00 m ³

Part	Material	Cutting List Volume	Real Volume	Weight	Price
Steps	beech/hetre	0.20 m ³	0.15 m ³	103.20 kg	1.024,40 €
Lateral Cut Strings	beech/hetre	0.16 m ³	0.09 m ³	62.83 kg	851,80 €
Handrails	beech/hetre	0.04 m ³	0.01 m ³	10.06 kg	223,14 €
Newel Posts	beech/hetre	0.05 m ³	0.05 m ³	36.01 kg	273,98 €
Tube Rails	<Unnamed>	0.02 m ³	0.00 m ³		
Total		0.47 m³	0.30 m³	212.10 kg	2.373,32 €